

DATE : 05/09/2005

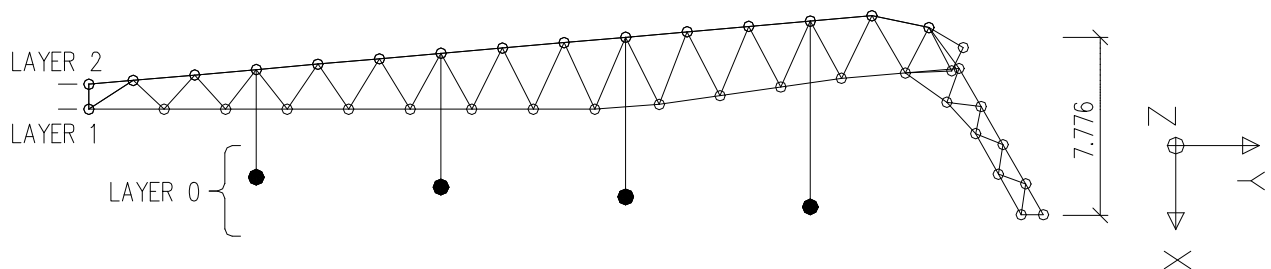
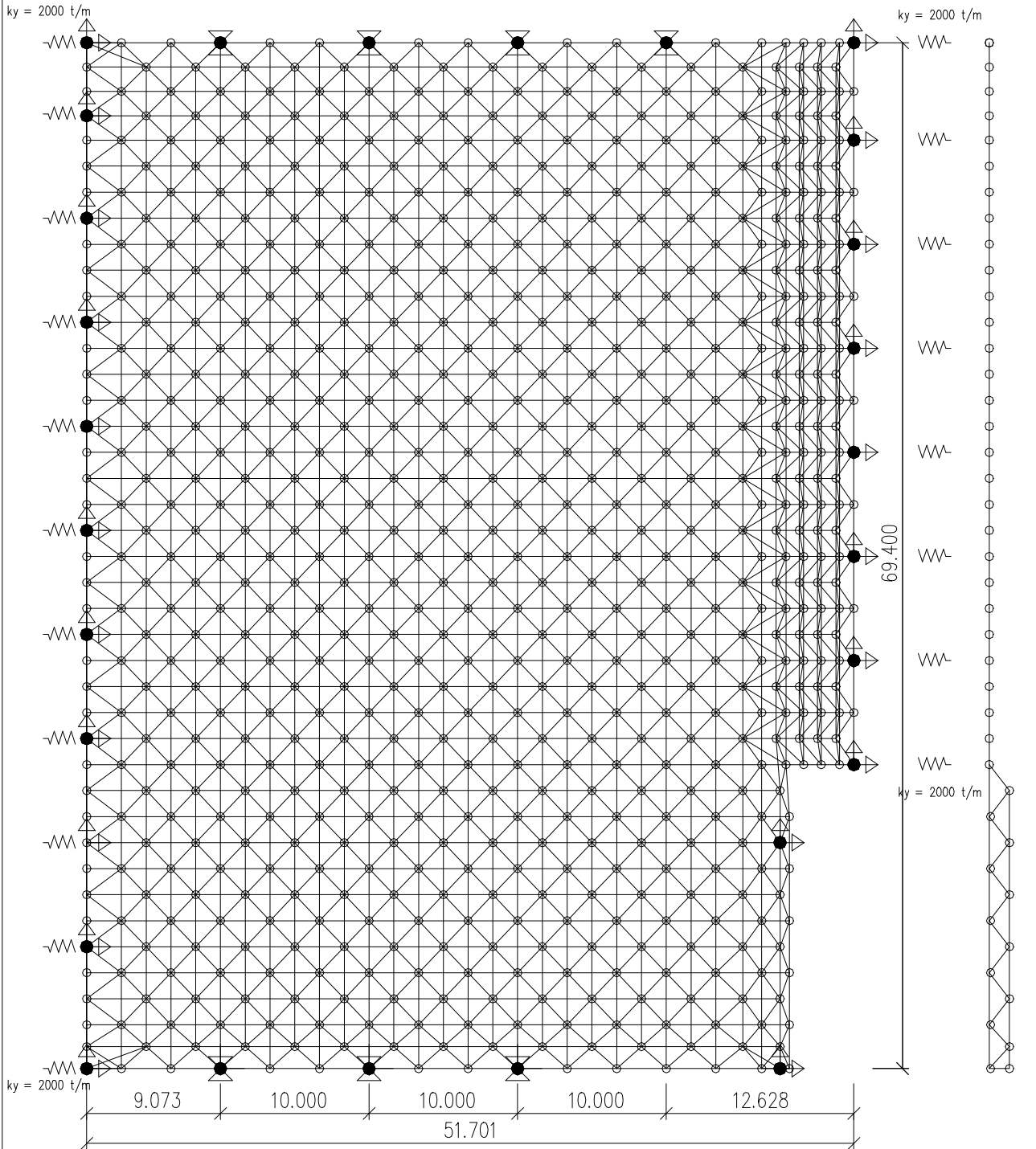
REF : YDS-05/19A-R3

# **ROOF 1: SPORTS HALL**

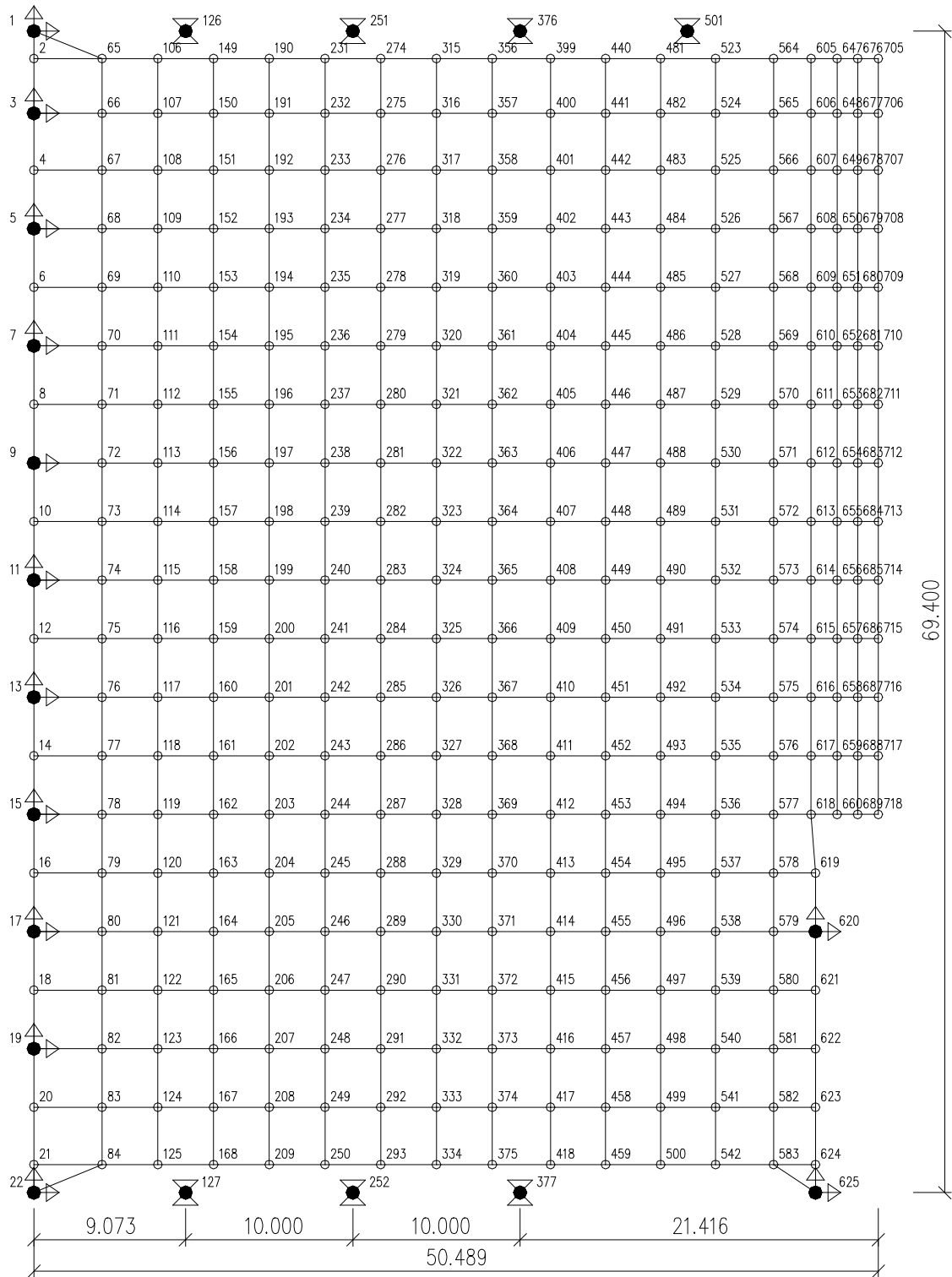
## **SPACE FRAME DESIGN REPORT (SUMMARY)**

	<u>PAGE</u>
1 – SPACE FRAME PLAN.....	I
2 – LOAD ANALYSIS .....	IV
3 – LOAD FACTORS AND COMBINATIONS .....	VI
4 – DESIGN FOR MEMBERS IN TENSION.....	VIII
5 – DESIGN FOR MEMBERS IN COMPRESSION ( BUCKLING DESIGN ).....	IX
6 – RESISTANCE OF BOLTS IN TENSION.....	X
7 – RESISTANCE OF THE SLEEVES IN COMPRESSION.....	XI
8 – DESIGN OF PURLIN SECTIONS.....	XII
9 – DESIGN OF SUPPORTS.....	XIII
10 – COMPUTATIONAL RESULTS (SUMMARY) .....	XVII

# 1-SPACE FRAME PLAN

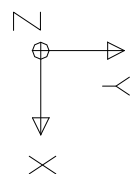


LAYERS 0&1 WITH NODE NUMBERS:

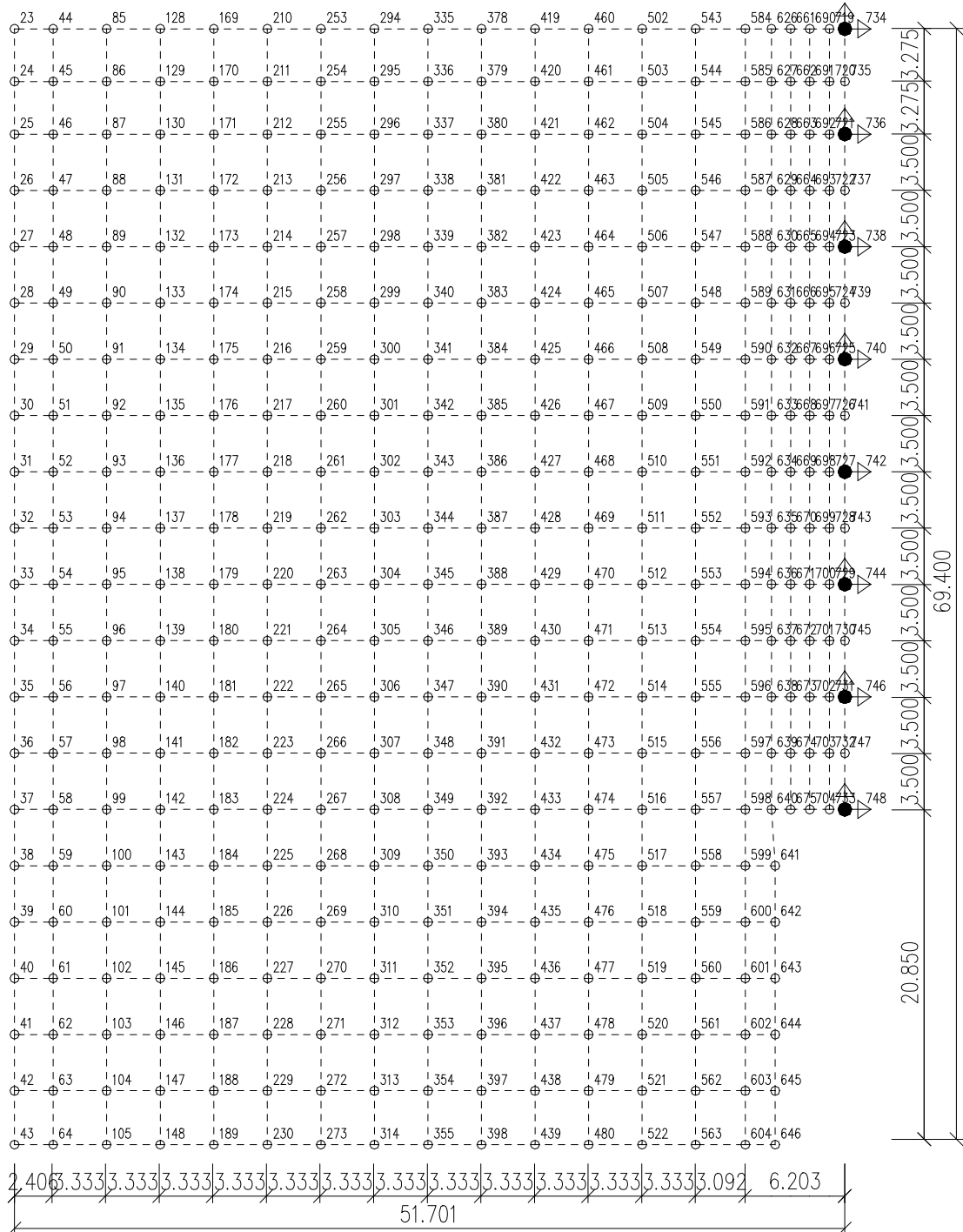


SIGN CONVENTION:

- ⊠ FIXED SUPPORT
- ↔ FREE IN X
- ↕ FREE IN Y
- ↔↕ FREE IN BOTH DIRECTIONS



### LAYER 2 WITH NODE NUMBERS:



## **2 - LOAD ANALYSIS**

### **2.1 – SYNOPSIS**

- This report covers the analysis results and design calculations for Roof 1: Sports Hall.  
In addition to the standard live load allowance, a 1 ton accidental live load has also been considered, applied at the middle of the roof and divided into 4 nodes of the bottom layer as 250 kg per node.
- The wind is acting horizontally on to the the left and right sides of the space frame. The wind area has been defined by the area consisting of the half-lengths of the singular columns (each having a different length) and wind force is transferred to the space frame upper nodes of by vertical beams, which also carries the cladding.
- In general, the dead and wind loads (like cladding & false ceiling) are acted on the surface area, and the service and live loads are acted on the projectional area in accordance with the live load concept.

- The steel grade of the space frame members is S235JR, and the steel grade of nodes is C45.

## 2.2 - LOADING CRITERIA

Space Frame Self Weight	: SW = 20.9 kg/m <sup>2</sup> (by computer analysis)
Dead Load #1	: DL <sub>1</sub> = 57.0 kg/m <sup>2</sup> (purlins + cladding)
Dead Load #2	: DL <sub>1</sub> = 10.0 kg/m <sup>2</sup> (false ceiling)
Service Load	: SL = 10.0 kg/m <sup>2</sup> (ventillation, equipments, etc.)
Live Load #1	: LL <sub>1</sub> = 50.0 kg/m <sup>2</sup> (standard live load)
Live Load #2	: LL <sub>2</sub> = 250 kg/node @ 4 nodes (accidental load)
Wind Load	: WL = 50.0 kg/m <sup>2</sup>
Temperature Difference	: ΔT = ± 10 °C

## 2.3 - LOADING CONDITIONS AND NODAL LOADS

- LOADING 1 : Space Frame Self Weight : SW = 20.9 kg/m<sup>2</sup>  
(Pi) is different on each node and calculated by computer automatically.
- LOADING 2 : Purlins + Cladding : DL<sub>1</sub> = 57.0 kg/m<sup>2</sup>  
Pi (z) = - 0.057 × ( Ai ) where Ai = load area (top layer)
- LOADING 3 : False Ceiling : DL<sub>2</sub> = 10.0 kg/m<sup>2</sup>  
Pi (z) = - 0.010 × ( Ai ) where Ai = load area (bottom layer)
- LOADING 4 : Service Load : SL = 10.0 kg/m<sup>2</sup>  
Pi (z) = - 0.010 × ( Ai ) where Ai = load area (bottom layer)
- LOADING 5 : Live Load : LL<sub>1</sub> = 50.0 kg/m<sup>2</sup>  
Pi (z) = -0.050 × ( Ai ) where Ai = load area (top layer)

REVISION NO : 01

- LOADING 6 : Accidental Load :  $LL_1 = 50.0 \text{ kg/m}^2$   
 $P_i(z) = -0.250 @ P_i$  where  $P_i = 4$  mid-points(bottom layer)
- LOADING 7 : Wind Uplift :  $WL = 50.0 \text{ kg/m}^2$   
 $P_i(z) = 0.050 \times (A_i)$  where  $A_i = \text{load area}$  (top layer)
- LOADING 8 : Wind on the Left Side :  $WL = 50.0 \text{ kg/m}^2$   
 $P_i(x) = 0.050 \times (A_i)$  where  $A_i = \text{load area}$  (left cladding)
- LOADING 9 : Wind on the Right Side :  $WL = 50.0 \text{ kg/m}^2$   
 $P_i(-x) = 0.050 \times (A_i)$  where  $A_i = \text{load area}$  (right cladding)
- LOADING 10 : Wind on the Front Side :  $WL = 50.0 \text{ kg/m}^2$   
 $P_i(y) = 0.050 \times (A_i)$  where  $A_i = \text{load area}$  (front cladding)
- LOADING 11 : Wind on the Back Side:  $WL = 50.0 \text{ kg/m}^2$   
 $P_i(-y) = 0.050 \times (A_i)$  where  $A_i = \text{load area}$  (back cladding)
- LOADING 12 : Temperature Difference :  $\Delta T = \pm 10 \text{ }^\circ\text{C}$



### 2.3 – CALCULATION OF WIND FACTORS

The wind load has been specified as 50 kg/sqm for buildings below 10 m height, and 75 kg/sqm for those above 10 m, by the Wind Code. Yet, since the building in question is mostly below the specified limit, a uniform wind pressure of 50 kg/sqm will be assumed. The wind coefficients of the same are also used as multiplied by the corresponding EuroCODE load factors.

In addition to the uplift on the main roof, the structure is also subject to the lateral wind effects due to the roof cladding, cladding on the sides, and the irregular geometry of the structure. The inclined top portion of the roof has been considered as the back-side, when entering the wind load. Wind has been acted as perpendicular to the cladding surfaces.

***Example: (Case : 1.00 DL + 1.50 WL, Wind Acting from Left)***

Main Roof Uplift	: $0.4 \times 1.5$	= 0.6
Pressure on Left-Side	: $0.8 \times 1.5$	= 1.2
Pressure on Right-Side	: $-0.4 \times 1.5$	= -0.6
Pressure on Front-Side	: $-0.4 \times 1.5$	= -0.6
Pressure on Back-Side	: $-0.4 \times 1.5$	= -0.6

### 3.- LOAD FACTORS AND COMBINATIONS

#### 3.1 – LIST OF LOADING CASES

- LOADING 1 : Space Frame Self Weight
- LOADING 2 : Purlins + Cladding
- LOADING 3 : False Ceiling
- LOADING 4 : Service Load
- LOADING 5 : Live Load
- LOADING 6 : Accidental Load
- LOADING 7 : Wind Uplift
- LOADING 8 : Wind on the Left Side
- LOADING 9 : Wind on the Right Side
- LOADING 10 : Wind on the Front Side
- LOADING 11 : Wind on the Back Side
- LOADING 12 : Temperature Difference

#### 3.2 – LOAD FACTORS AND COMBINATIONS

The calculations are based upon EuroCODE standards with the ultimate stress principle with slight changes with respect to the Spanish Design Code.

The dead load factor is taken as 1.33 with respect to the Spanish code, and live load factors are taken as 1.33 & 1.50 with respect to both Spanish code and EC3, depending on the number of load cases.

Hence, load factors to be used in calculations are as follows;

- 1.33 DL (incl. SW & SL)
- 1.33 DL + 1.50 LL
- 1.00 DL + 1.50 WL (unfavorable case)
- 1.33 DL + 1.33 LL<sub>1</sub> + 1.33 WL
- 1.00 DL + 0.90 LL<sub>1</sub> + 1.00 LL<sub>2</sub> (accidental)
- 1.33 DL ± 1.50 T
- 1.33 DL + 1.33 LL<sub>1</sub> ± 1.33T
- 1.00 DL + 1.33 WL ± 1.33T (unfavorable case)
- 1.33 DL + 1.33 WL ± 1.33T
- 1.00 DL + 0.90 LL<sub>1</sub> + 1.00 LL<sub>2</sub> ± 1.00T

There are a total of 38 load combinations is obtained corresponding to the most unfavourable conditions.

### 3.3 – LOADING COMBINATIONS AND LOAD FACTORS

NUMBER OF COMBINED LOAD CASES ..... : 38  
 WIND LOAD STARTED AT COMBINATION NUMBER ..... : 39

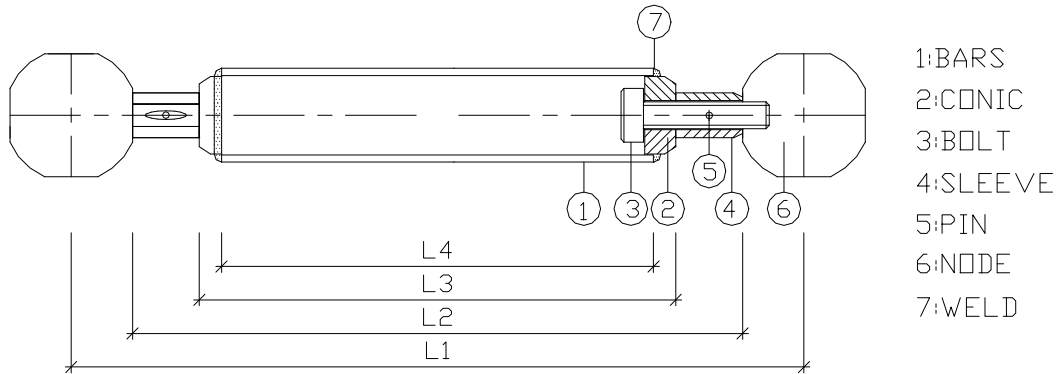
#### LOADING COMBINATION CONSTANTS

COMBINATION NO	LOAD CASE 1	LOAD CASE 2	LOAD CASE 3	LOAD CASE 4	LOAD CASE 5	LOAD CASE 6	LOAD CASE 7	LOAD CASE 8	LOAD CASE 9	LOAD CASE 10	LOAD CASE 11	LOAD CASE 12
1	1.33	0.00	0.00	0.00	0.00	0.00	0.00	0.00	0.00	0.00	0.00	0.00
2	1.33	1.33	0.00	0.00	0.00	0.00	0.00	0.00	0.00	0.00	0.00	0.00
3	1.33	1.33	1.33	0.00	0.00	0.00	0.00	0.00	0.00	0.00	0.00	0.00
4	1.33	1.33	1.33	1.33	0.00	0.00	0.00	0.00	0.00	0.00	0.00	0.00
5	1.33	1.33	1.33	1.33	1.50	0.00	0.00	0.00	0.00	0.00	0.00	0.00
6	1.00	1.00	1.00	1.00	0.90	1.00	0.00	0.00	0.00	0.00	0.00	0.00
7	1.00	1.00	0.00	0.00	0.00	0.00	0.60	1.20	-0.60	-0.60	-0.60	0.00
8	1.00	1.00	0.00	0.00	0.00	0.00	0.60	-0.60	1.20	-0.60	-0.60	0.00
9	1.00	1.00	0.00	0.00	0.00	0.00	0.60	-0.60	-0.60	1.20	-0.60	0.00
10	1.00	1.00	0.00	0.00	0.00	0.00	0.60	-0.60	-0.60	-0.60	1.20	0.00
11	1.33	1.33	1.33	1.33	1.33	0.00	0.53	1.06	-0.53	-0.53	-0.53	0.00
12	1.33	1.33	1.33	1.33	1.33	0.00	0.53	-0.53	1.06	-0.40	-0.53	0.00
13	1.33	1.33	1.33	1.33	1.33	0.00	0.53	-0.53	-0.53	1.06	-0.53	0.00
14	1.33	1.33	1.33	1.33	1.33	0.00	0.53	-0.53	-0.53	-0.53	1.06	0.00
15	1.33	1.33	0.00	0.00	0.00	0.00	0.00	0.00	0.00	0.00	0.00	1.50
16	1.33	1.33	0.00	0.00	0.00	0.00	0.00	0.00	0.00	0.00	0.00	-1.50
17	1.33	1.33	1.33	1.33	0.00	0.00	0.00	0.00	0.00	0.00	0.00	1.50
18	1.33	1.33	1.33	1.33	0.00	0.00	0.00	0.00	0.00	0.00	0.00	-1.50
19	1.33	1.33	1.33	1.33	1.33	0.00	0.00	0.00	0.00	0.00	0.00	1.33
20	1.33	1.33	1.33	1.33	1.33	0.00	0.00	0.00	0.00	0.00	0.00	-1.33
21	1.00	1.00	1.00	1.00	0.90	1.00	0.00	0.00	0.00	0.00	0.00	1.00
22	1.00	1.00	1.00	1.00	0.90	1.00	0.00	0.00	0.00	0.00	0.00	-1.00
23	1.00	1.00	0.00	0.00	0.00	0.00	0.53	1.06	-0.53	-0.53	-0.53	1.33
24	1.00	1.00	0.00	0.00	0.00	0.00	0.53	-0.53	1.06	-0.40	-0.53	1.33
25	1.00	1.00	0.00	0.00	0.00	0.00	0.53	-0.53	-0.53	1.06	-0.53	1.33
26	1.00	1.00	0.00	0.00	0.00	0.00	0.53	-0.53	-0.53	-0.53	1.06	1.33
27	1.00	1.00	0.00	0.00	0.00	0.00	0.53	1.06	-0.53	-0.53	-0.53	-1.33
28	1.00	1.00	0.00	0.00	0.00	0.00	0.53	-0.53	1.06	-0.40	-0.53	-1.33
29	1.00	1.00	0.00	0.00	0.00	0.00	0.53	-0.53	-0.53	1.06	-0.53	-1.33
30	1.00	1.00	0.00	0.00	0.00	0.00	0.53	-0.53	-0.53	-0.53	1.06	-1.33
31	1.33	1.33	0.00	0.00	0.00	0.00	0.53	1.06	-0.53	-0.53	-0.53	1.33
32	1.33	1.33	0.00	0.00	0.00	0.00	0.53	-0.53	1.06	-0.53	-0.53	1.33
33	1.33	1.33	0.00	0.00	0.00	0.00	0.53	-0.53	-0.53	1.06	-0.53	1.33
34	1.33	1.33	0.00	0.00	0.00	0.00	0.53	-0.53	-0.53	-0.53	1.06	1.33
35	1.33	1.33	0.00	0.00	0.00	0.00	0.53	1.06	-0.53	-0.53	-0.53	-1.33
36	1.33	1.33	0.00	0.00	0.00	0.00	0.53	-0.53	1.06	-0.53	-0.53	-1.33
37	1.33	1.33	0.00	0.00	0.00	0.00	0.53	-0.53	-0.53	1.06	-0.53	-1.33
38	1.33	1.33	0.00	0.00	0.00	0.00	0.53	-0.53	-0.53	-0.53	1.06	-1.33

#### 4 – DESIGN FOR MEMBERS IN TENSION

Design for tension members are according to Eurocode 3.

Material of steel : S235JR ;  $F_y = 235 \text{ N/mm}^2$   
 $F_u = 360 \text{ N/mm}^2$



Resistance safety factor for gross crosssection area of bar ;  $\gamma = 1.1$   
 Resistance safety factor for welding ;  $\gamma = 1.25$

Design tension strength for S235JR steel pipes (on gross c.section);  $f_{yd} = f_y / \gamma_m = 235 / 1.1 = 213.6 \text{ N/mm}^2$

Design shear strength of weld ;  $f_{vw,d} = (f_u / \sqrt{3}) / (\beta_w \gamma_{Mw}) = (360 / \sqrt{3}) / (0.8 \times 1.25) = 207.8 \text{ N/mm}^2$

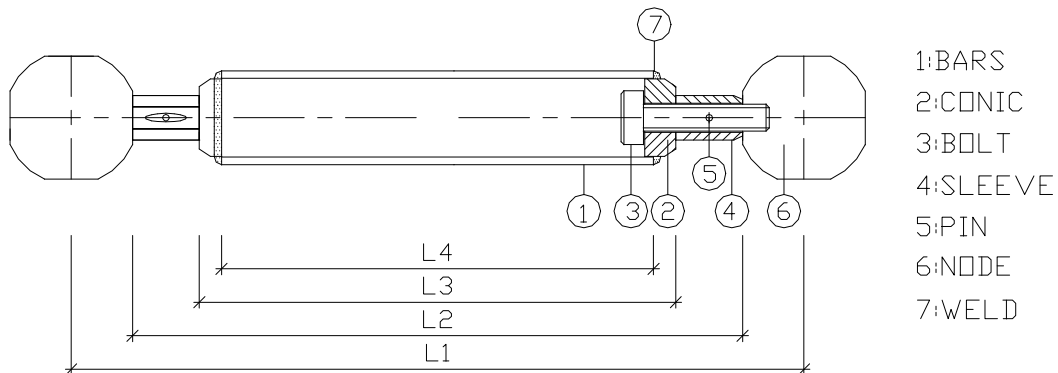
#### NOTES :

- Tension bearing capacity of the member is minimum tension bearing capacity of the bar and bolt.
- Properties of the sections and bearing capacities are shown on the last pages of design calculations.
- Maximum design stresses on members are shown on the last pages of design calculations.

## 5 – DESIGN FOR MEMBERS IN COMPRESSION ( BUCKLING DESIGN )

Design for compression members are according to Eurocode 3.

Material of steel : S235JR ;  $F_y = 235 \text{ N/mm}^2$   
 $F_u = 360 \text{ N/mm}^2$



Resistance safety factor for gross crosssection area of bar ;  $\gamma = 1.1$

The design buckling resistance for S235JR steel pipes in compression ;

$$f_{yd} = X \beta_A f_y / \gamma_{M1}$$

$$\beta_A = A_{eff} / A = 1.0 \text{ ( for all type of members in space frame )}$$

$$f_y = 235 \text{ N/mm}^2$$

$$\gamma_{M1} = 1.1$$

Reduction factor ;  $X = 1 / [ \phi + (\phi^2 - \lambda^2)^{0.5} ]$

$$\lambda_1 = 93.9 \varepsilon$$

$$\varepsilon = (235 / f_y)^{0.5} \text{ ( For S235JR steel ; } \varepsilon=1 \text{ and } \lambda_1 = 93.9 \text{ )}$$

$$\phi = 0.5 [ 1 + a (\lambda - 0.2) + \lambda^2 ]$$

$a =$  imperfection factor ;  $a = 0.34$  for bucking curve b

$$\lambda = (\lambda / \lambda_1) (\beta_A)^{0.5} ; \text{ Since } \beta_A=1 ; \lambda = (\lambda / \lambda_1)$$

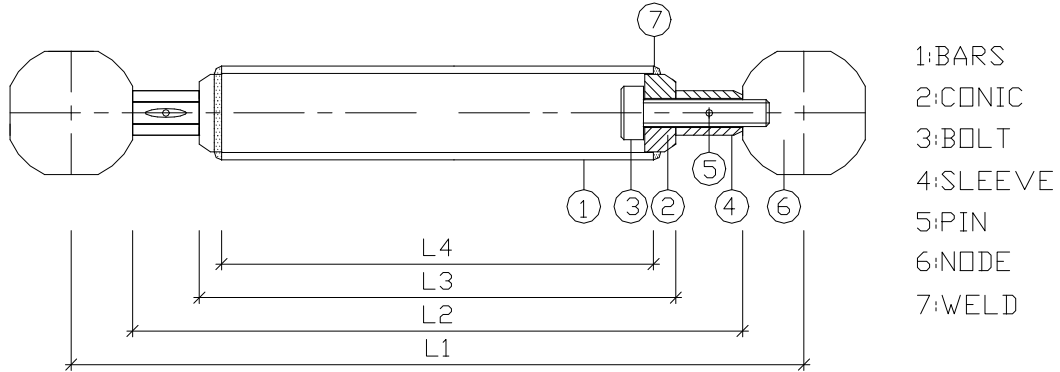
NOTES :

- Compression bearing capacity of the member is minimum value of bearing capacity of the bar& sleeve.
- Properties of the sections and bearing capacities are shown on the last pages of design calculations.
- Maximum design stresses on members are shown on the last pages of design calculations.

## 6 – RESISTANCE OF BOLTS IN TENSION

Design for tension members are according to Eurocode 3.

Material of the bolts = 10.9 ;  $f_{yb} = 900 \text{ N/mm}^2$   
 $f_{ub} = 1000 \text{ N/mm}^2$



Resistance safety factor for bolted connections ;  $\gamma = 1.25$

The design tension resistance stress for 10.9 bolts ;

$$f_{t,Rd} = 0.9 f_{ub} / \gamma_{Mb} \quad ; \quad f_{ub} = 1000 \text{ N/mm}^2$$

$$\gamma_{Mb} = 1.25$$

$$f_{t,Rd} = 0.9 \times 1000 / 1.25 = 720 \text{ N/mm}^2$$

The design tension resistance for 10.9 bolts ;

$$N_{t,Rd} = 0.9 f_{ub} A_s / \gamma_{Mb} \quad ; \quad A_s = \text{Threated crossection area ( stress area ) of bolts}$$

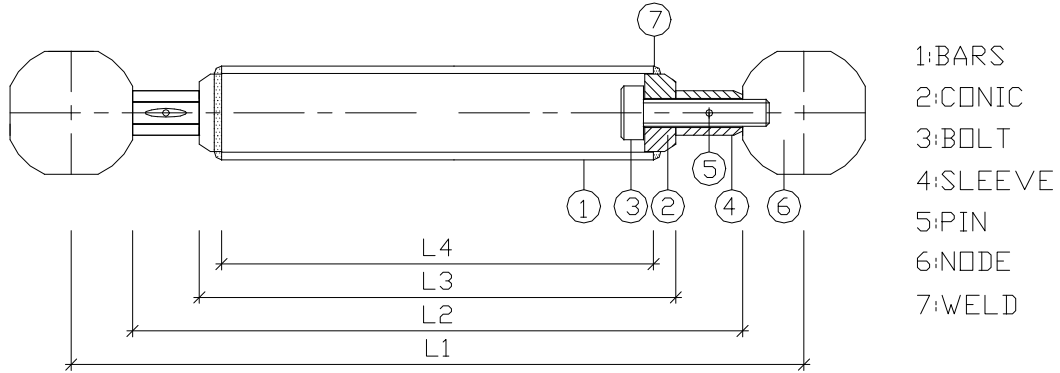
### NOTES :

- Tension bearing capacity of the member is minimum tension bearing capacity of the bar and bolt.
- Properties of the sections and bearing capacities are shown on the last pages of design calculations.
- Maximum design stresses on members are shown on the last pages of design calculations.

## 7 – RESISTANCE OF THE SLEEVES IN COMPRESSION

Design for compression members are according to Eurocode 3.

Material of steel for sleeves : A 1030 ( AISI 1030 ) ;  $F_{yb} = 345 \text{ N/mm}^2$



Resistance safety factor for net crossection area of sleeve ;  $\gamma = 1.25$

The design compression resistance stress for sleeves ;

$$f_{b,Rd} = f_{yb} / \gamma_{Mb} ; \quad f_{yb} = 345 \text{ N/mm}^2$$

$$\gamma_{Mb} = 1.25$$

$$f_{b,Rd} = 345 / 1.25 = 276 \text{ N/mm}^2$$

The design compression resistance for sleeves ;

$$N_{t,Rd} = f_{yb} A_s / \gamma_{Mb} ; \quad A_s = \text{Net crossection area of sleeve on pin hole}$$

NOTES :

- Compression bearing capacity of the member is minimum value of bearing capacity of the bar & sleeve.
- Properties of the sections and bearing capacities are shown on the last pages of design calculations.
- Maximum design stresses on members are shown on the last pages of design calculations.

**8 - DESIGN OF PURLIN SECTIONS:****(TYPICAL PURLIN SECTION)****Module Length:** 3.333 m**Load Length:** 3.500 m**Loading:**CASE I : 1.33 DL + 1.50 LLPurlins+Cladding : DL = 57 kg/m<sup>2</sup>Live Load : LL = 50 kg/m<sup>2</sup>

Design Load :

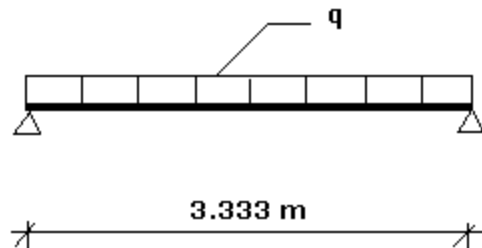
$$Q = 1.33 \times 57 + 1.50 \times 50 = 151 \text{ kg/m}^2$$

CASE II : 1.00 DL + 1.50 WLPurlins+Cladding : DL = 57 kg/m<sup>2</sup>Wind Uplift: WL = -50 kg/m<sup>2</sup>

Design Load :

$$Q = 1.0 \times 57 - 1.5 \times 0.8 \times 50 = -3 \text{ kg/m}^2$$

Therefore, the design load is  $Q = 151 \text{ kg/m}^2$ , which is the most unfavorable condition.

**Purlin Section:**

$$q = 3.50 \times 151 = 529 \text{ kg/m} \quad \sigma_d = 2136 \text{ kg/cm}^2 \text{ for Fe 360 (EuroCODE)}$$

$$M_{\max} = (529 \times 3.333^2) / 8 = 735 \text{ kg.m}$$

$$W_x = 73500 / 2136 = 34.4 \text{ cm}^3 \Rightarrow \text{RHS } 60 \times 120 \times 4 \text{ will be selected.}$$

$$60 \times 120 \times 4 \rightarrow W_x = 37.8 \text{ cm}^3 \quad W_y = 25.3 \text{ cm}^3$$

$$I_x = 226 \text{ cm}^4 \quad I_y = 75.8 \text{ cm}^4$$

**Deflection check:**

Under working loads;

$$Q' = 1.0 \times 57 + 1.0 \times 50 = 107 \text{ kg/m}^2 \rightarrow q' = 3.50 \times 107 = 375 \text{ kg/m}$$

Maximum deflection;

$$\delta_{\max} = 6.20 q l^4 / I_x = 6.20 (0.375 \times 3.333^4 / 226) = 1.27 \text{ cm} < L / 200 = 1.67 \text{ cm OK}$$



**9.-DESIGN OF SUPPORTS:**

(N.B. All calculations and material properties are based upon EuroCODE specifications.)

**Materials:**

Concrete Walls	: C30 Concrete	→ $\sigma_u = 300 \text{ kg/cm}^2$ , $\sigma_d = \sigma_u / 1.5 = 200 \text{ kg/cm}^2$
Steel Base Plates	: S235JR (St.37)	→ $\sigma_y = 2350 \text{ kg/cm}^2$ , $\sigma_d = \sigma_u / 1.1 = 2136 \text{ kg/cm}^2$
Supports & Flanges	: C45 Steel	→ $\sigma_y = 4300 \text{ kg/cm}^2$ , $\sigma_d = \sigma_y / 1.25 = 3440 \text{ kg/cm}^2$
Anchor Bars	: Grade 6.8 Steel	→ $\sigma_u = 6000 \text{ kg/cm}^2$ , $\sigma_y = 4800 \text{ kg/cm}^2$
Welds	: Std. Fillet Welds	→ $\tau_d = 2078 \text{ kg/cm}^2$

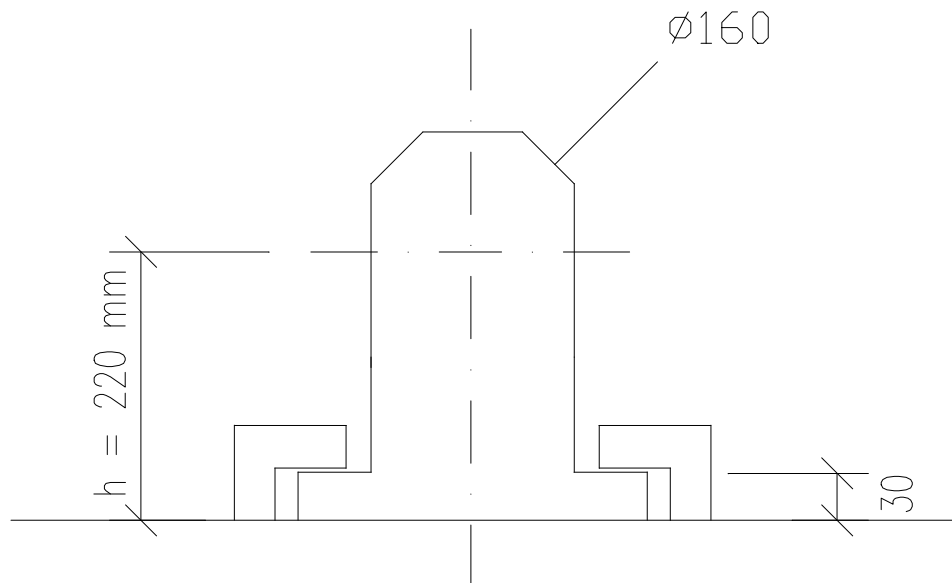
(where  $\sigma_u$  : Ultimate Axial Stress ,  $\sigma_y$  : Yield Stress ,  $\sigma_d$  : Design Stress,  $\tau_d$  : Design Shear Stress)

(High strength mechanical / chemical anchors should be used with along with epoxy filler, instead of HILTI HVU anchors, since standard chemical anchors will be unable to carry the existing loads.)

**(TYPICAL SUPPORT DESIGN: Ø160 SUPPORTS ON CONCRETE WALLS)**

Load:  $R_v = 53 \text{ t}$  (vertical),  $R_h = 43 \text{ t}$  (horizontal)

Lateral Displacement:  $\delta_x = 15 \text{ mm}$  (Unfactored working condition)



## ◆ Support height:

Support height is;  $h = 220 \text{ mm}$  excluding the base plate.

## ◆ Support neck stress check:

For C45, Ø160;

$$\sigma = \frac{N}{A} + \frac{M}{W} = \frac{53 \times 10^3}{\pi \times 16^2 / 4} + \frac{43 \times 10^3 \times 22}{\pi \times 16^3 / 32} = 2620 \text{ kg/cm}^2 < \sigma_d = 3440 \text{ kg/cm}^2 \quad \text{OK}$$

◆ Support flange thickness design ( $t_2$ ):

For C45, Ø230;

$$\sigma' = \frac{53 \times 10^3}{\pi \times 23^2 / 4} + \frac{43 \times 10^3 \times 25}{\pi \times 23^3 / 32} = 1030 \text{ kg/cm}^2$$

Assuming a uniform stress under the flange...

At the section;  $\sigma = \frac{M}{W}$ , where  $M = \sigma' \cdot A \cdot l$

$$M = 1030 \times 40 \times (0.42 \times 3.5) = 60,600 \text{ kg}\cdot\text{cm}$$

$$\sigma_d = 3440 \text{ kg/cm}^2 = \frac{60600}{W} \rightarrow W = 18 \text{ cm}^3$$

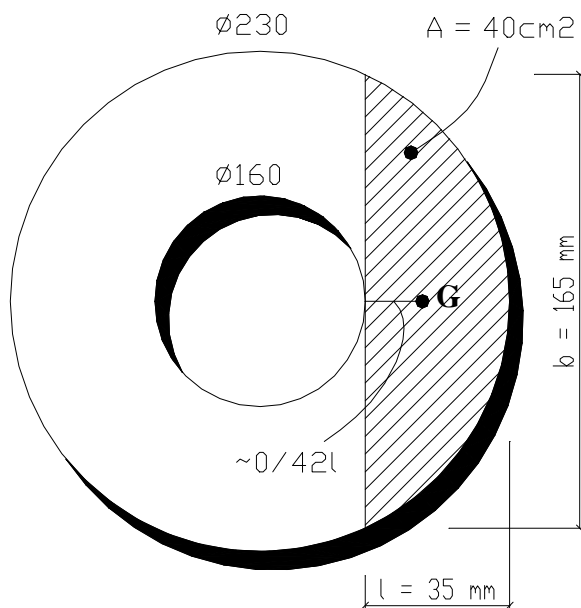
$$W = \frac{b \cdot t^2}{6} \quad 18 = \frac{16.5 \cdot t^2}{6} \quad t_2 = 2.55 \text{ cm}$$

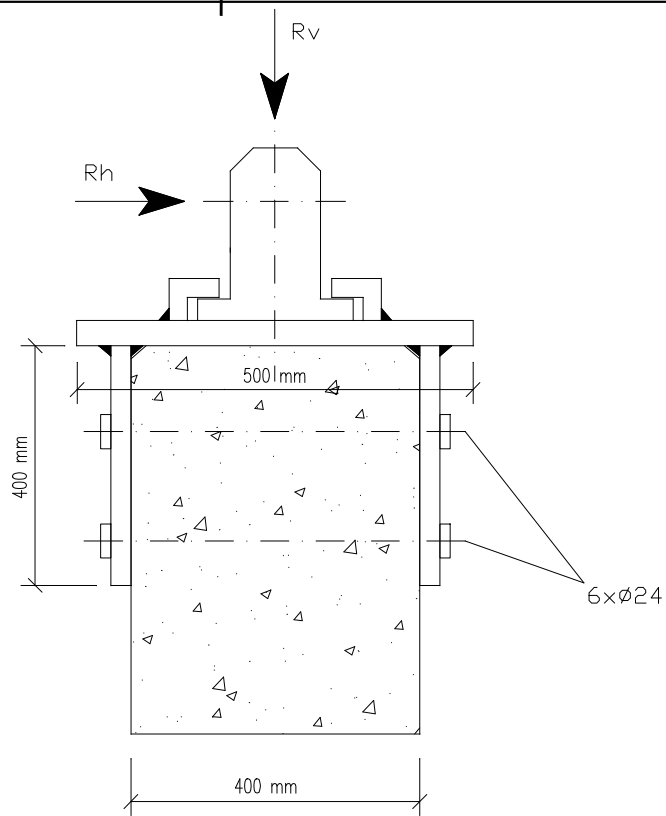
∴ Flange thickness will be taken as 3 cm

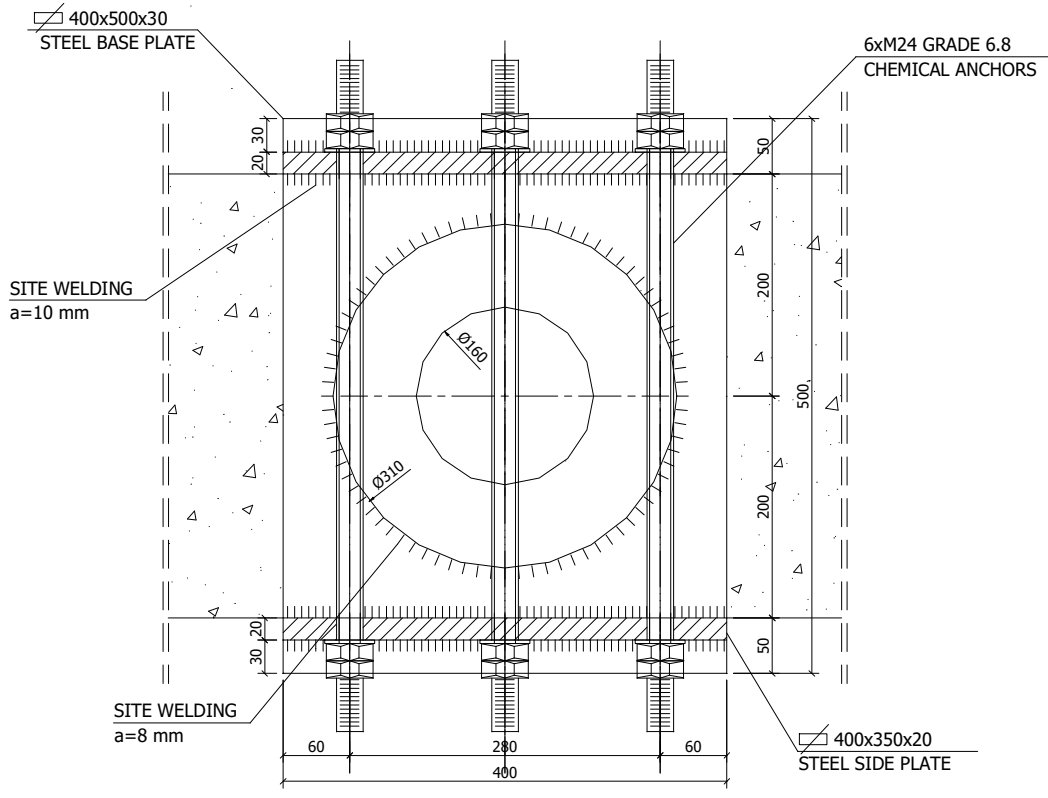
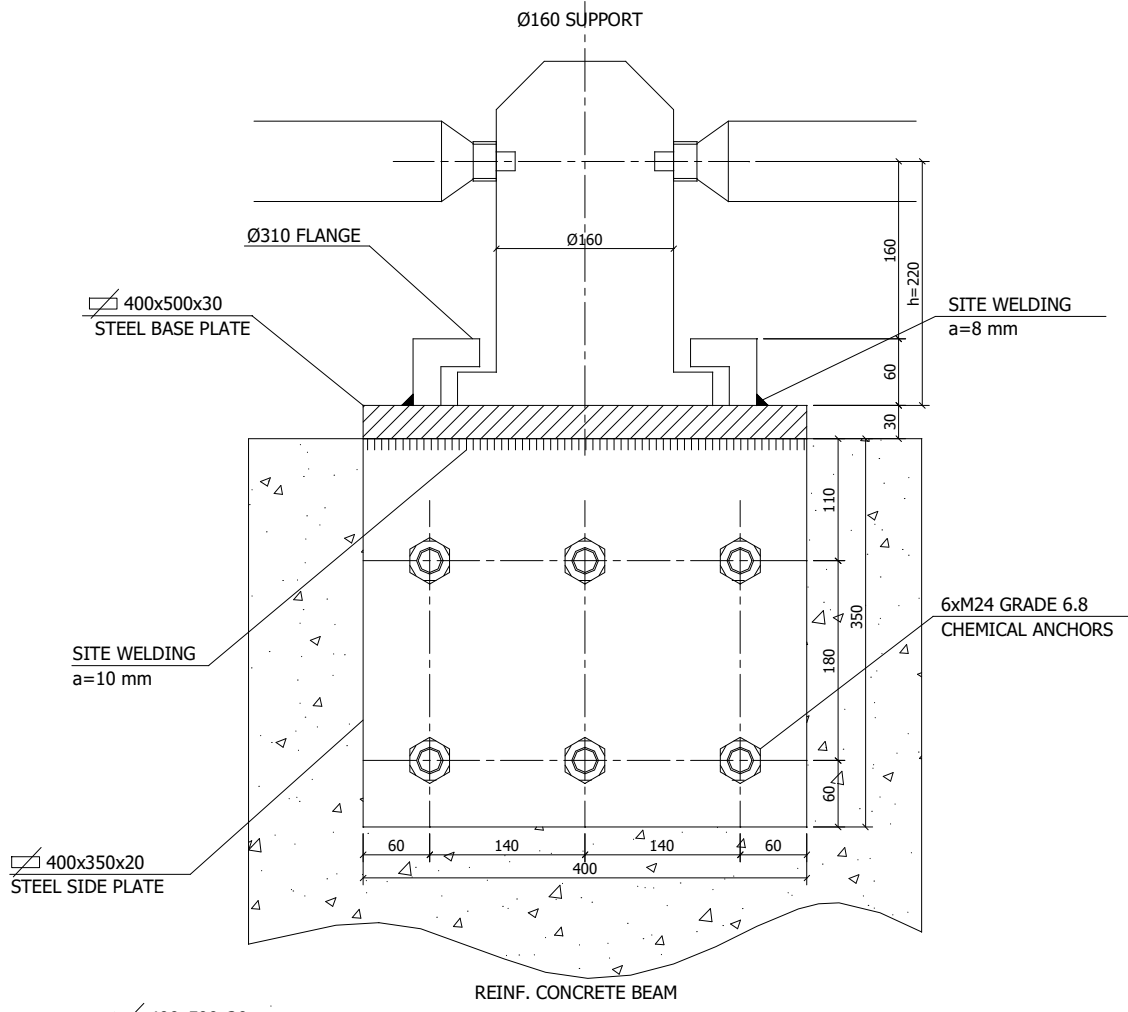
◆ Support anchor design:

**6 × M24 Grade 6.8 chemical anchor bolts are selected.**

As some of the wall parts have already been poured, and as there are quite high reactions at the supports, we will resort to a sandwich type supporting mechanism, where two extra plates cover the concrete wall from the sides throughout which a number of anchor bars pass. Corresponding holes will be bored into the wall / foundation, and an epoxy-like cohesive material will be used to fill the space between the hole and anchors. It is crucial that anchors should be extended throughout the beam; otherwise, they may not









30	1.00	1.00	0.00	0.00	0.00	0.00	0.53	-0.53	-0.53	-0.53	1.06	-1.33
31	1.33	1.33	0.00	0.00	0.00	0.00	0.53	1.06	-0.53	-0.53	-0.53	1.33
32	1.33	1.33	0.00	0.00	0.00	0.00	0.53	-0.53	1.06	-0.53	-0.53	1.33
33	1.33	1.33	0.00	0.00	0.00	0.00	0.53	-0.53	-0.53	1.06	-0.53	1.33
34	1.33	1.33	0.00	0.00	0.00	0.00	0.53	-0.53	-0.53	-0.53	1.06	1.33
35	1.33	1.33	0.00	0.00	0.00	0.00	0.53	1.06	-0.53	-0.53	-0.53	-1.33
36	1.33	1.33	0.00	0.00	0.00	0.00	0.53	-0.53	1.06	-0.53	-0.53	-1.33
37	1.33	1.33	0.00	0.00	0.00	0.00	0.53	-0.53	-0.53	1.06	-0.53	-1.33
38	1.33	1.33	0.00	0.00	0.00	0.00	0.53	-0.53	-0.53	-0.53	1.06	-1.33

NODE NO	MINIMUM SUPPORT DISPLACEMENTS			MAXIMUM SUPPORT DISPLACEMENTS		
	X-Dir[m]	Y-Dir[m]	Z-Dir[m]	X-Dir[m]	Y-Dir[m]	Z-Dir[m]
1	-0.007493(19)	-0.002850(14)	0.000000(1)	0.004808(27)	-0.000219(29)	0.000000(1)
3	-0.006323(19)	-0.006151(14)	0.000000(1)	0.004002(27)	-0.000640(1)	0.000000(1)
5	-0.004343(19)	-0.011226(5)	0.000000(1)	0.002871(27)	-0.001395(1)	0.000000(1)
7	-0.002434(32)	-0.014932(5)	0.000000(1)	0.001749(27)	-0.002043(1)	0.000000(1)
9	0.000000(1)	-0.016986(5)	0.000000(1)	0.000000(1)	-0.002496(1)	0.000000(1)
11	-0.001559(28)	-0.017254(5)	0.000000(1)	0.003459(19)	-0.002640(1)	0.000000(1)
13	-0.002504(28)	-0.016050(5)	0.000000(1)	0.006405(19)	-0.002495(1)	0.000000(1)
15	-0.003407(28)	-0.013084(5)	0.000000(1)	0.009443(19)	-0.001996(1)	0.000000(1)
17	-0.004495(28)	-0.008091(19)	0.000000(1)	0.011584(19)	-0.001158(1)	0.000000(1)
19	-0.005894(28)	-0.004448(14)	0.000000(1)	0.012396(19)	-0.000502(1)	0.000000(1)
22	-0.007270(28)	-0.000710(26)	0.000000(1)	0.014309(19)	0.000792(20)	0.000000(1)
126	0.000000(1)	0.000000(1)	0.000000(1)	0.000000(1)	0.000000(1)	0.000000(1)
127	0.000000(1)	0.000000(1)	0.000000(1)	0.000000(1)	0.000000(1)	0.000000(1)
251	0.000000(1)	0.000000(1)	0.000000(1)	0.000000(1)	0.000000(1)	0.000000(1)
252	0.000000(1)	0.000000(1)	0.000000(1)	0.000000(1)	0.000000(1)	0.000000(1)
376	0.000000(1)	0.000000(1)	0.000000(1)	0.000000(1)	0.000000(1)	0.000000(1)
377	0.000000(1)	0.000000(1)	0.000000(1)	0.000000(1)	0.000000(1)	0.000000(1)
501	0.000000(1)	0.000000(1)	0.000000(1)	0.000000(1)	0.000000(1)	0.000000(1)
620	-0.007723(36)	-0.005788(30)	0.000000(1)	0.005928(23)	0.016546(19)	0.000000(1)
625	-0.010095(28)	-0.007051(30)	0.000000(1)	0.009688(31)	0.018723(19)	0.000000(1)
734	-0.007503(32)	0.000147(1)	0.000000(1)	0.005774(27)	0.002114(19)	0.000000(1)
736	-0.006447(19)	0.000706(1)	0.000000(1)	0.004333(27)	0.006505(19)	0.000000(1)
738	-0.004893(19)	0.001466(1)	0.000000(1)	0.003046(27)	0.011521(5)	0.000000(1)
740	-0.002929(32)	0.002287(1)	0.000000(1)	0.001811(27)	0.016501(5)	0.000000(1)
742	0.000000(1)	0.002922(1)	0.000000(1)	0.000000(1)	0.019945(5)	0.000000(1)
744	-0.001816(28)	0.003221(1)	0.000000(1)	0.002659(31)	0.021378(5)	0.000000(1)
746	-0.002575(28)	0.002944(1)	0.000000(1)	0.005399(19)	0.019416(5)	0.000000(1)
748	-0.003023(28)	0.001811(1)	0.000000(1)	0.011057(19)	0.012449(19)	0.000000(1)

COMBINATION NO	MINIMUM DISPLACEMENTS FOR COMBINATIONS			MAXIMUM DISPLACEMENTS FOR COMBINATIONS		
	NODE X-Dir[m]	NODE Y-Dir[m]	NODE Z-Dir[m]	NODE X-Dir[m]	NODE Y-Dir[m]	NODE Z-Dir[m]
1	356 -0.002511	552 -0.003697	284 -0.026923	375 0.003152	715 0.003698	733 0.000467
2	356 -0.009306	551 -0.012816	283 -0.085514	375 0.011071	715 0.012567	641 0.001451
3	356 -0.010463	551 -0.014418	283 -0.095817	375 0.012394	715 0.014127	641 0.001644
4	356 -0.011616	551 -0.015933	283 -0.106136	375 0.013725	715 0.015633	641 0.001867
5	356 -0.018305	551 -0.024401	283 -0.164115	375 0.021577	715 0.024090	641 0.003161
6	356 -0.012775	551 -0.017137	283 -0.115445	375 0.015069	715 0.016896	641 0.002187
7	356 -0.001257	551 -0.006631	283 -0.041871	375 0.008207	713 0.007180	642 0.000859
8	356 -0.007424	551 -0.006543	284 -0.041694	375 0.002040	712 0.006900	733 0.000808
9	356 -0.004579	551 -0.006138	284 -0.041561	375 0.005440	715 0.006551	642 0.000785
10	356 -0.004328	690 -0.010762	304 -0.039871	375 0.005240	715 0.005077	642 0.000532
11	356 -0.012457	551 -0.020777	283 -0.137660	375 0.020584	714 0.020965	733 0.002468
12	356 -0.017925	551 -0.020669	283 -0.137458	375 0.015115	715 0.020203	733 0.002719
13	356 -0.015403	551 -0.020339	283 -0.137382	375 0.018130	715 0.020562	733 0.002563
14	356 -0.015180	551 -0.022897	283 -0.135770	375 0.017953	715 0.019255	641 0.001958
15	356 -0.013035	11 -0.009553	284 -0.080983	375 0.018316	660 0.016559	704 0.003451
16	398 -0.015061	551 -0.019184	304 -0.090963	378 0.013281	714 0.012231	642 0.001707
17	356 -0.015345	11 -0.011725	284 -0.101572	375 0.020970	660 0.019465	704 0.003854
18	398 -0.016844	551 -0.022300	304 -0.111524	378 0.015352	714 0.015277	642 0.001952
19	356 -0.020853	551 -0.017796	284 -0.153394	375 0.027111	660 0.026287	704 0.004452
20	398 -0.020295	551 -0.029088	304 -0.162217	378 0.019965	715 0.022815	642 0.002213
21	356 -0.015261	551 -0.012892	284 -0.112331	375 0.019899	660 0.019280	704 0.003292
22	398 -0.014953	551 -0.021382	304 -0.118965	378 0.014656	715 0.016658	642 0.001648
23	356 -0.005214	11 -0.005539	284 -0.040354	375 0.014644	703 0.010662	675 0.002813
24	356 -0.010681	11 -0.005238	284 -0.040238	375 0.009175	660 0.010725	675 0.003286
25	356 -0.008160	11 -0.005037	284 -0.040121	375 0.012191	703 0.010951	675 0.003101
26	356 -0.007937	10 -0.007244	284 -0.038618	375 0.012013	625 0.007254	641 0.001403
27	398 -0.007984	551 -0.012617	304 -0.049291	378 0.011688	713 0.007225	642 0.001499
28	398 -0.013659	551 -0.012510	304 -0.049114	378 0.005928	712 0.006891	642 0.001427
29	398 -0.010425	551 -0.012180	304 -0.049022	378 0.008430	714 0.006631	642 0.001433
30	398 -0.010449	661 -0.015509	304 -0.047526	378 0.008211	714 0.005326	642 0.001209
31	356 -0.007523	11 -0.007804	284 -0.061571	375 0.017391	703 0.013393	704 0.002799
32	356 -0.012992	11 -0.007531	284 -0.061457	375 0.011923	703 0.013429	704 0.003307
33	356 -0.010469	11 -0.007302	284 -0.061338	375 0.014938	703 0.013683	704 0.003055
34	356 -0.010246	10 -0.009382	284 -0.059836	375 0.014760	715 0.009007	641 0.001763
35	398 -0.009706	551 -0.015797	304 -0.070492	378 0.013723	714 0.010297	642 0.001740
36	398 -0.015381	551 -0.015719	304 -0.070318	378 0.007963	712 0.009731	642 0.001670
37	398 -0.012147	551 -0.015360	304 -0.070223	378 0.010464	714 0.009719	642 0.001674
38	398 -0.012171	551 -0.017918	304 -0.068727	378 0.010245	714 0.008414	642 0.001449

DIR	MINIMUM COMBINED DISPLACEMENTS			MAXIMUM COMBINED DISPLACEMENTS		
	NODE NO	COMBINATION NO	DISPLACE. [m]	NODE NO	COMBINATION NO	DISPLACE. [m]
X	356	19	-0.020853	375	19	0.027111
Y	551	20	-0.029088	660	19	0.026287
Z	283	5	-0.164115	704	19	0.004452

COMBINATION NO : 1

NODE NO	RESTRAINTS			SUPPORT X[T]	REACTIONS Y[T]	FORCES Z[T]	DISPLACEMENTS		
	IXD	IYD	IZD				X[m]	Y[m]	Z[m]
1	0	0	1	-0.000	0.453	0.157	-0.000361	-0.000227	0.000000
3	0	0	1	0.000	1.280	0.870	-0.000326	-0.000640	0.000000
5	0	0	1	0.000	2.789	2.066	-0.000259	-0.001395	0.000000
7	0	0	1	-0.000	4.085	4.066	-0.000154	-0.002043	0.000000
9	1	0	1	-0.579	4.991	5.454	0.000000	-0.002496	0.000000
11	0	0	1	-0.000	5.281	6.849	0.000333	-0.002640	0.000000
13	0	0	1	0.000	4.989	6.693	0.000612	-0.002495	0.000000
15	0	0	1	-0.000	3.992	5.248	0.000897	-0.001996	0.000000
17	0	0	1	0.000	2.315	3.217	0.001025	-0.001158	0.000000
19	0	0	1	0.000	1.004	1.305	0.000951	-0.000502	0.000000
22	0	0	1	-0.000	-0.174	0.243	0.000964	0.000087	0.000000
126	1	1	1	0.000	0.000	0.817	0.000000	0.000000	0.000000
127	1	1	1	0.000	0.000	0.908	0.000000	0.000000	0.000000
251	1	1	1	0.000	0.000	2.588	0.000000	0.000000	0.000000
252	1	1	1	0.000	0.000	2.348	0.000000	0.000000	0.000000
376	1	1	1	0.000	0.000	2.893	0.000000	0.000000	0.000000
377	1	1	1	0.000	0.000	4.453	0.000000	0.000000	0.000000
501	1	1	1	0.000	0.000	1.359	0.000000	0.000000	0.000000
620	0	0	1	-0.000	0.000	4.709	-0.000206	0.001439	0.000000
625	0	0	1	0.000	0.000	1.096	0.000108	0.001277	0.000000
734	0	0	1	-0.000	-0.294	0.564	-0.000362	0.000147	0.000000
736	0	0	1	0.000	-1.412	2.018	-0.000388	0.000706	0.000000
738	0	0	1	-0.000	-2.933	3.714	-0.000364	0.001466	0.000000
740	0	0	1	-0.000	-4.574	5.496	-0.000255	0.002287	0.000000
742	1	0	1	0.579	-5.844	7.016	0.000000	0.002922	0.000000
744	0	0	1	-0.000	-6.442	7.842	0.000214	0.003221	0.000000
746	0	0	1	-0.000	-5.888	6.680	0.000569	0.002944	0.000000
748	0	0	1	0.000	-3.622	4.448	0.001246	0.001811	0.000000

SUM OF REACTIVE FORCES : (X) = -0.000 (Y) = -0.001 (Z) = 95.117

COMBINATION NO : 2

NODE NO	RESTRAINTS			SUPPORT X[T]	REACTIONS Y[T]	FORCES Z[T]	DISPLACEMENTS		
	IXD	IYD	IZD				X[m]	Y[m]	Z[m]
1	0	0	1	0.000	2.400	1.014	-0.001792	-0.001200	0.000000
3	0	0	1	0.000	6.026	4.696	-0.001596	-0.003013	0.000000
5	0	0	1	-0.000	11.652	9.213	-0.001146	-0.005826	0.000000
7	0	0	1	0.000	15.588	15.311	-0.000598	-0.007794	0.000000
9	1	0	1	-2.381	17.856	18.803	0.000000	-0.008928	0.000000
11	0	0	1	0.000	18.257	22.449	0.001273	-0.009129	0.000000
13	0	0	1	0.000	16.992	21.942	0.002279	-0.008496	0.000000
15	0	0	1	-0.000	13.774	18.221	0.003310	-0.006887	0.000000
17	0	0	1	0.000	8.401	12.591	0.003842	-0.004201	0.000000
19	0	0	1	0.000	4.139	6.585	0.003671	-0.002070	0.000000
22	0	0	1	0.000	-0.671	1.552	0.003923	0.000336	0.000000
126	1	1	1	0.000	0.000	4.676	0.000000	0.000000	0.000000
127	1	1	1	0.000	0.000	5.368	0.000000	0.000000	0.000000
251	1	1	1	0.000	0.000	11.925	0.000000	0.000000	0.000000
252	1	1	1	0.000	0.000	10.922	0.000000	0.000000	0.000000
376	1	1	1	0.000	0.000	12.255	0.000000	0.000000	0.000000
377	1	1	1	0.000	0.000	18.939	0.000000	0.000000	0.000000
501	1	1	1	0.000	0.000	6.371	0.000000	0.000000	0.000000
620	0	0	1	0.000	-0.000	19.373	-0.001364	0.005401	0.000000
625	0	0	1	0.000	-0.000	5.456	0.000320	0.006029	0.000000
734	0	0	1	0.000	-2.106	4.159	-0.001542	0.001053	0.000000
736	0	0	1	0.000	-6.573	10.889	-0.001689	0.003286	0.000000
738	0	0	1	0.000	-12.052	16.855	-0.001481	0.006026	0.000000
740	0	0	1	0.000	-17.257	22.303	-0.000979	0.008629	0.000000
742	1	0	1	2.381	-20.934	26.721	0.000000	0.010467	0.000000
744	0	0	1	-0.000	-22.490	28.946	0.000666	0.011245	0.000000
746	0	0	1	-0.000	-20.369	24.619	0.001869	0.010185	0.000000
748	0	0	1	-0.000	-12.637	16.003	0.004092	0.006319	0.000000

SUM OF REACTIVE FORCES : (X) = -0.000 (Y) = -0.002 (Z) = 378.157

COMBINATION NO : 3

NODE NO	RESTRAINTS			SUPPORT X[T]	REACTIONS Y[T]	FORCES Z[T]	DISPLACEMENTS		
	IXD	IYD	IZD				X[m]	Y[m]	Z[m]
1	0	0	1	0.000	2.683	1.110	-0.001978	-0.001342	0.000000
3	0	0	1	0.000	6.780	5.249	-0.001762	-0.003390	0.000000
5	0	0	1	-0.000	13.134	10.357	-0.001266	-0.006567	0.000000
7	0	0	1	0.000	17.551	17.181	-0.000661	-0.008775	0.000000
9	1	0	1	-2.674	20.069	21.045	0.000000	-0.010035	0.000000
11	0	0	1	0.000	20.498	25.083	0.001417	-0.010249	0.000000
13	0	0	1	0.000	19.064	24.517	0.002531	-0.009532	0.000000
15	0	0	1	-0.000	15.459	20.394	0.003672	-0.007730	0.000000
17	0	0	1	0.000	9.443	14.128	0.004256	-0.004722	0.000000
19	0	0	1	0.000	4.664	7.401	0.004050	-0.002332	0.000000
22	0	0	1	0.000	-0.765	1.728	0.004325	0.000382	0.000000
126	1	1	1	0.000	0.000	5.188	0.000000	0.000000	0.000000
127	1	1	1	0.000	0.000	5.971	0.000000	0.000000	0.000000
251	1	1	1	0.000	0.000	13.342	0.000000	0.000000	0.000000
252	1	1	1	0.000	0.000	12.223	0.000000	0.000000	0.000000
376	1	1	1	0.000	0.000	13.685	0.000000	0.000000	0.000000
377	1	1	1	0.000	0.000	21.120	0.000000	0.000000	0.000000
501	1	1	1	0.000	0.000	7.027	0.000000	0.000000	0.000000
620	0	0	1	0.000	-0.000	21.695	-0.001571	0.006052	0.000000
625	0	0	1	0.000	-0.000	6.048	0.000309	0.006696	0.000000
734	0	0	1	0.000	-2.314	4.531	-0.001753	0.001157	0.000000
736	0	0	1	0.000	-7.402	12.151	-0.001902	0.003701	0.000000
738	0	0	1	0.000	-13.597	18.945	-0.001662	0.006798	0.000000
740	0	0	1	0.000	-19.441	25.056	-0.001095	0.009720	0.000000
742	1	0	1	2.673	-23.543	29.984	0.000000	0.011771	0.000000
744	0	0	1	-0.000	-25.266	32.456	0.000741	0.012633	0.000000
746	0	0	1	-0.000	-22.873	27.541	0.002086	0.011437	0.000000
748	0	0	1	-0.000	-14.147	17.833	0.004600	0.007074	0.000000

SUM OF REACTIVE FORCES : (X) = -0.000 (Y) = -0.002 (Z) = 422.990  
 COMBINATION NO : 4

NODE NO	RESTRAINTS			SUPPORT X[T]	REACTIONS FORCES			DISPLACEMENTS		
	IXD	IYD	IZD		Y[T]	Z[T]	X[m]	Y[m]	Z[m]	
1	0	0	1	0.000	2.895	1.198	-0.002145	-0.001447	0.000000	
3	0	0	1	0.000	7.433	5.786	-0.001918	-0.003717	0.000000	
5	0	0	1	-0.000	14.493	11.489	-0.001381	-0.007247	0.000000	
7	0	0	1	0.000	19.377	19.050	-0.000723	-0.009689	0.000000	
9	1	0	1	-2.931	22.146	23.284	0.000000	-0.011073	0.000000	
11	0	0	1	0.000	22.600	27.715	0.001549	-0.011300	0.000000	
13	0	0	1	0.000	21.020	27.090	0.002764	-0.010510	0.000000	
15	0	0	1	-0.000	17.065	22.564	0.004012	-0.008533	0.000000	
17	0	0	1	0.000	10.439	15.662	0.004645	-0.005220	0.000000	
19	0	0	1	0.000	5.169	8.215	0.004405	-0.002585	0.000000	
22	0	0	1	0.000	-0.860	1.904	0.004706	0.000430	0.000000	
126	1	1	1	0.000	0.000	5.714	0.000000	0.000000	0.000000	
127	1	1	1	0.000	0.000	6.574	0.000000	0.000000	0.000000	
251	1	1	1	0.000	0.000	14.774	0.000000	0.000000	0.000000	
252	1	1	1	0.000	0.000	13.522	0.000000	0.000000	0.000000	
376	1	1	1	0.000	0.000	15.134	0.000000	0.000000	0.000000	
377	1	1	1	0.000	0.000	23.306	0.000000	0.000000	0.000000	
501	1	1	1	0.000	0.000	7.631	0.000000	0.000000	0.000000	
620	0	0	1	0.000	-0.000	23.963	-0.001739	0.006733	0.000000	
625	0	0	1	0.000	-0.000	6.647	0.000347	0.007367	0.000000	
734	0	0	1	0.000	-2.455	4.766	-0.001952	0.001227	0.000000	
736	0	0	1	0.000	-8.111	13.106	-0.002098	0.004055	0.000000	
738	0	0	1	0.000	-14.992	20.675	-0.001832	0.007496	0.000000	
740	0	0	1	0.000	-21.469	27.449	-0.001204	0.010735	0.000000	
742	1	0	1	2.931	-25.995	32.885	0.000000	0.012998	0.000000	
744	0	0	1	-0.000	-27.891	35.611	0.000818	0.013946	0.000000	
746	0	0	1	-0.000	-25.267	30.181	0.002300	0.012633	0.000000	
748	0	0	1	-0.000	-15.601	19.548	0.005107	0.007800	0.000000	

SUM OF REACTIVE FORCES : (X) = -0.000 (Y) = -0.003 (Z) = 465.442

COMBINATION NO : 5

NODE NO	RESTRAINTS			SUPPORT X[T]	REACTIONS FORCES			DISPLACEMENTS		
	IXD	IYD	IZD		Y[T]	Z[T]	X[m]	Y[m]	Z[m]	
1	0	0	1	0.000	4.332	1.992	-0.003450	-0.002166	0.000000	
3	0	0	1	0.000	11.455	9.448	-0.003111	-0.005727	0.000000	
5	0	0	1	-0.000	22.451	18.455	-0.002227	-0.011226	0.000000	
7	0	0	1	0.000	29.864	30.133	-0.001158	-0.014932	0.000000	
9	1	0	1	-4.472	33.973	36.430	0.000000	-0.016986	0.000000	
11	0	0	1	0.000	34.509	43.090	0.002405	-0.017254	0.000000	
13	0	0	1	0.000	32.100	42.117	0.004293	-0.016050	0.000000	
15	0	0	1	-0.000	26.167	35.329	0.006247	-0.013084	0.000000	
17	0	0	1	0.000	16.114	24.885	0.007271	-0.008057	0.000000	
19	0	0	1	0.000	8.111	13.404	0.006941	-0.004055	0.000000	
22	0	0	1	0.000	-1.377	3.191	0.007477	0.000689	0.000000	
126	1	1	1	0.000	0.000	9.607	0.000000	0.000000	0.000000	
127	1	1	1	0.000	0.000	10.974	0.000000	0.000000	0.000000	
251	1	1	1	0.000	0.000	24.085	0.000000	0.000000	0.000000	
252	1	1	1	0.000	0.000	21.958	0.000000	0.000000	0.000000	
376	1	1	1	0.000	0.000	24.515	0.000000	0.000000	0.000000	
377	1	1	1	0.000	0.000	37.622	0.000000	0.000000	0.000000	
501	1	1	1	0.000	0.000	12.242	0.000000	0.000000	0.000000	
620	0	0	1	0.000	-0.000	37.972	-0.002697	0.010852	0.000000	
625	0	0	1	0.000	0.000	11.008	0.000845	0.012108	0.000000	
734	0	0	1	-0.000	-3.727	7.082	-0.003060	0.001863	0.000000	
736	0	0	1	-0.000	-12.458	19.516	-0.003239	0.006229	0.000000	
738	0	0	1	0.000	-23.041	31.066	-0.002826	0.011521	0.000000	
740	0	0	1	0.000	-33.002	41.450	-0.001850	0.016501	0.000000	
742	1	0	1	4.472	-39.890	49.726	0.000000	0.019945	0.000000	
744	0	0	1	-0.000	-42.755	53.869	0.001261	0.021378	0.000000	
746	0	0	1	-0.000	-38.831	45.649	0.003531	0.019416	0.000000	
748	0	0	1	-0.000	-23.996	29.758	0.007938	0.011998	0.000000	

SUM OF REACTIVE FORCES : (X) = -0.000 (Y) = -0.004 (Z) = 726.573

COMBINATION NO : 6

NODE NO	RESTRAINTS			SUPPORT X[T]	REACTIONS FORCES			DISPLACEMENTS		
	IXD	IYD	IZD		Y[T]	Z[T]	X[m]	Y[m]	Z[m]	
1	0	0	1	0.000	3.041	1.377	-0.002397	-0.001520	0.000000	
3	0	0	1	0.000	8.012	6.551	-0.002159	-0.004006	0.000000	
5	0	0	1	-0.000	15.700	12.834	-0.001547	-0.007850	0.000000	
7	0	0	1	0.000	20.916	21.027	-0.000806	-0.010458	0.000000	
9	1	0	1	-3.136	23.834	25.493	0.000000	-0.011917	0.000000	
11	0	0	1	0.000	24.240	30.201	0.001683	-0.012120	0.000000	
13	0	0	1	0.000	22.547	29.513	0.003005	-0.011274	0.000000	
15	0	0	1	-0.000	18.357	24.705	0.004371	-0.009178	0.000000	
17	0	0	1	0.000	11.283	17.343	0.005082	-0.005642	0.000000	
19	0	0	1	0.000	5.661	9.296	0.004846	-0.002831	0.000000	
22	0	0	1	0.000	-0.958	2.204	0.005212	0.000479	0.000000	
126	1	1	1	0.000	0.000	6.628	0.000000	0.000000	0.000000	
127	1	1	1	0.000	0.000	7.579	0.000000	0.000000	0.000000	
251	1	1	1	0.000	0.000	16.677	0.000000	0.000000	0.000000	
252	1	1	1	0.000	0.000	15.212	0.000000	0.000000	0.000000	
376	1	1	1	0.000	0.000	16.988	0.000000	0.000000	0.000000	
377	1	1	1	0.000	0.000	26.092	0.000000	0.000000	0.000000	
501	1	1	1	0.000	0.000	8.500	0.000000	0.000000	0.000000	
620	0	0	1	0.000	-0.000	26.468	-0.001879	0.007551	0.000000	
625	0	0	1	0.000	0.000	7.615	0.000563	0.008385	0.000000	
734	0	0	1	-0.000	-2.607	4.972	-0.002136	0.001304	0.000000	
736	0	0	1	-0.000	-8.718	13.711	-0.002267	0.004359	0.000000	
738	0	0	1	0.000	-16.137	21.815	-0.001979	0.008068	0.000000	
740	0	0	1	0.000	-23.131	29.109	-0.001297	0.011565	0.000000	
742	1	0	1	3.136	-27.980	34.928	0.000000	0.013990	0.000000	
744	0	0	1	-0.000	-30.000	37.841	0.000886	0.015000	0.000000	



746	0	0	1	-0.000	-27.237	32.069	0.002479	0.013619	0.000000
748	0	0	1	-0.000	-16.825	20.889	0.005562	0.008413	0.000000

SUM OF REACTIVE FORCES : (X) = -0.000 (Y) = -0.003 (Z) = 507.635  
 COMBINATION NO : 7

NODE NO	RESTRAINTS			SUPPORT X[T]	REACTIONS Y[T]	FORCES Z[T]	DISPLACEMENTS		
	IXD	IYD	IZD				X[m]	Y[m]	Z[m]
1	0	0	1	0.000	1.074	0.299	0.000868	-0.000537	0.000000
3	0	0	1	-0.000	3.008	2.199	0.000892	-0.001504	0.000000
5	0	0	1	-0.000	5.789	4.262	0.000853	-0.002894	0.000000
7	0	0	1	0.000	7.697	6.721	0.000807	-0.003849	0.000000
9	1	0	1	-8.467	9.236	8.994	0.000000	-0.004618	0.000000
11	0	0	1	0.000	9.890	11.345	0.001715	-0.004945	0.000000
13	0	0	1	0.000	9.198	10.525	0.002487	-0.004599	0.000000
15	0	0	1	-0.000	7.573	8.664	0.003195	-0.003787	0.000000
17	0	0	1	0.000	4.964	5.831	0.003588	-0.002482	0.000000
19	0	0	1	-0.000	2.854	2.954	0.003627	-0.001427	0.000000
22	0	0	1	0.000	0.576	0.775	0.003892	-0.000288	0.000000
126	1	1	1	0.000	0.000	1.870	0.000000	0.000000	0.000000
127	1	1	1	0.000	0.000	2.231	0.000000	0.000000	0.000000
251	1	1	1	0.000	0.000	5.181	0.000000	0.000000	0.000000
252	1	1	1	0.000	0.000	4.881	0.000000	0.000000	0.000000
376	1	1	1	0.000	0.000	5.479	0.000000	0.000000	0.000000
377	1	1	1	0.000	0.000	8.529	0.000000	0.000000	0.000000
501	1	1	1	0.000	0.000	2.880	0.000000	0.000000	0.000000
620	0	0	1	0.000	-0.000	8.842	0.002099	0.001894	0.000000
625	0	0	1	0.000	0.000	2.002	0.002646	0.002042	0.000000
734	0	0	1	0.000	-1.057	1.632	0.001517	0.000529	0.000000
736	0	0	1	-0.000	-3.505	5.162	0.001286	0.001752	0.000000
738	0	0	1	-0.000	-6.194	8.025	0.001120	0.003097	0.000000
740	0	0	1	-0.000	-8.509	10.825	0.000915	0.004255	0.000000
742	1	0	1	-7.619	-10.732	13.245	0.000000	0.005366	0.000000
744	0	0	1	0.000	-12.025	14.680	0.001642	0.006013	0.000000
746	0	0	1	-0.000	-10.679	12.546	0.002587	0.005340	0.000000
748	0	0	1	-0.000	-6.675	8.437	0.003880	0.003337	0.000000

SUM OF REACTIVE FORCES : (X) = -16.086 (Y) = 2.484 (Z) = 179.019

COMBINATION NO : 8

NODE NO	RESTRAINTS			SUPPORT X[T]	REACTIONS Y[T]	FORCES Z[T]	DISPLACEMENTS		
	IXD	IYD	IZD				X[m]	Y[m]	Z[m]
1	0	0	1	0.000	1.968	0.566	-0.002330	-0.000984	0.000000
3	0	0	1	0.000	3.608	2.098	-0.002133	-0.001804	0.000000
5	0	0	1	0.000	6.269	4.125	-0.001766	-0.003134	0.000000
7	0	0	1	0.000	8.378	7.573	-0.001298	-0.004189	0.000000
9	1	0	1	6.241	9.259	8.954	0.000000	-0.004629	0.000000
11	0	0	1	0.000	9.274	10.309	-0.000584	-0.004637	0.000000
13	0	0	1	0.000	8.805	10.655	-0.000468	-0.004403	0.000000
15	0	0	1	-0.000	7.247	8.707	-0.000272	-0.003624	0.000000
17	0	0	1	0.000	4.620	5.881	-0.000242	-0.002310	0.000000
19	0	0	1	0.000	2.483	3.069	-0.000526	-0.001242	0.000000
22	0	0	1	0.000	-0.022	0.591	-0.000513	0.000011	0.000000
126	1	1	1	0.000	0.000	1.903	0.000000	0.000000	0.000000
127	1	1	1	0.000	0.000	2.160	0.000000	0.000000	0.000000
251	1	1	1	0.000	0.000	5.295	0.000000	0.000000	0.000000
252	1	1	1	0.000	0.000	4.766	0.000000	0.000000	0.000000
376	1	1	1	0.000	0.000	5.720	0.000000	0.000000	0.000000
377	1	1	1	0.000	0.000	8.295	0.000000	0.000000	0.000000
501	1	1	1	0.000	0.000	3.426	0.000000	0.000000	0.000000
620	0	0	1	-0.000	-0.000	8.308	-0.003479	0.002127	0.000000
625	0	0	1	0.000	0.000	1.858	-0.003257	0.002373	0.000000
734	0	0	1	-0.000	-1.422	2.441	-0.002739	0.000711	0.000000
736	0	0	1	0.000	-3.817	5.564	-0.002601	0.001908	0.000000
738	0	0	1	0.000	-6.578	8.714	-0.002305	0.003289	0.000000
740	0	0	1	0.000	-9.425	11.395	-0.001714	0.004712	0.000000
742	1	0	1	9.550	-10.864	13.389	0.000000	0.005432	0.000000
744	0	0	1	-0.000	-11.103	14.154	-0.001004	0.005552	0.000000
746	0	0	1	-0.000	-10.175	11.849	-0.000818	0.005087	0.000000
748	0	0	1	0.000	-6.022	7.253	0.000076	0.003011	0.000000

SUM OF REACTIVE FORCES : (X) = 15.791 (Y) = 2.484 (Z) = 179.019

COMBINATION NO : 9

NODE NO	RESTRAINTS			SUPPORT X[T]	REACTIONS Y[T]	FORCES Z[T]	DISPLACEMENTS		
	IXD	IYD	IZD				X[m]	Y[m]	Z[m]
1	0	0	1	0.000	0.941	0.504	-0.001149	-0.000470	0.000000
3	0	0	1	0.000	2.608	1.991	-0.001031	-0.001304	0.000000
5	0	0	1	-0.000	5.295	4.128	-0.000740	-0.002647	0.000000
7	0	0	1	0.000	7.284	7.118	-0.000401	-0.003642	0.000000
9	1	0	1	-0.845	8.473	8.923	0.000000	-0.004237	0.000000
11	0	0	1	0.000	8.758	10.773	0.000639	-0.004379	0.000000
13	0	0	1	0.000	8.184	10.541	0.001187	-0.004092	0.000000
15	0	0	1	-0.000	6.619	8.637	0.001749	-0.003309	0.000000
17	0	0	1	0.000	4.000	5.807	0.002077	-0.002000	0.000000
19	0	0	1	0.000	1.852	2.868	0.002084	-0.000926	0.000000
22	0	0	1	0.000	-0.448	0.710	0.002245	0.000224	0.000000
126	1	1	1	0.000	0.000	2.044	0.000000	0.000000	0.000000
127	1	1	1	0.000	0.000	2.330	0.000000	0.000000	0.000000
251	1	1	1	0.000	0.000	5.327	0.000000	0.000000	0.000000
252	1	1	1	0.000	0.000	4.887	0.000000	0.000000	0.000000
376	1	1	1	0.000	0.000	5.673	0.000000	0.000000	0.000000
377	1	1	1	0.000	0.000	8.560	0.000000	0.000000	0.000000
501	1	1	1	0.000	0.000	3.189	0.000000	0.000000	0.000000
620	0	0	1	0.000	-0.000	8.325	-0.000212	0.002413	0.000000
625	0	0	1	0.000	0.000	2.040	0.000346	0.002694	0.000000
734	0	0	1	-0.000	-1.248	2.147	-0.001204	0.000624	0.000000
736	0	0	1	0.000	-3.715	5.341	-0.001082	0.001858	0.000000
738	0	0	1	0.000	-6.383	8.325	-0.000886	0.003192	0.000000
740	0	0	1	0.000	-8.962	11.070	-0.000557	0.004481	0.000000

742	1	0	1	1.139	-10.792	13.278	0.000000	0.005396	0.000000
744	0	0	1	-0.000	-11.561	14.375	0.000422	0.005780	0.000000
746	0	0	1	-0.000	-10.480	12.153	0.001105	0.005240	0.000000
748	0	0	1	0.000	-6.375	7.956	0.002347	0.003188	0.000000

SUM OF REACTIVE FORCES : (X) = 0.294 (Y) = -5.953 (Z) = 179.019

COMBINATION NO : 10

NODE NO	RESTRAINTS			SUPPORT X[T]	REACTIONS Y[T]	FORCES Z[T]	DISPLACEMENTS		
	IXD	IYD	IZD				X[m]	Y[m]	Z[m]
1	0	0	1	0.000	3.530	0.743	-0.001671	-0.001765	0.000000
3	0	0	1	-0.000	6.001	2.508	-0.001323	-0.003000	0.000000
5	0	0	1	-0.000	9.192	4.497	-0.000890	-0.004596	0.000000
7	0	0	1	0.000	11.461	7.208	-0.000444	-0.005731	0.000000
9	1	0	1	-1.306	12.638	9.020	0.000000	-0.006319	0.000000
11	0	0	1	0.000	13.132	10.769	0.000798	-0.006566	0.000000
13	0	0	1	0.000	12.237	10.575	0.001446	-0.006118	0.000000
15	0	0	1	-0.000	10.131	8.749	0.002064	-0.005065	0.000000
17	0	0	1	0.000	7.064	5.923	0.002415	-0.003532	0.000000
19	0	0	1	0.000	4.374	3.170	0.002438	-0.002187	0.000000
22	0	0	1	0.000	1.367	0.865	0.002800	-0.000683	0.000000
126	1	1	1	0.000	0.000	1.640	0.000000	0.000000	0.000000
127	1	1	1	0.000	0.000	2.144	0.000000	0.000000	0.000000
251	1	1	1	0.000	0.000	4.945	0.000000	0.000000	0.000000
252	1	1	1	0.000	0.000	4.845	0.000000	0.000000	0.000000
376	1	1	1	0.000	0.000	5.070	0.000000	0.000000	0.000000
377	1	1	1	0.000	0.000	8.499	0.000000	0.000000	0.000000
501	1	1	1	0.000	0.000	3.606	0.000000	0.000000	0.000000
620	0	0	1	0.000	-0.000	10.904	-0.000565	-0.000098	0.000000
625	0	0	1	-0.000	-0.000	2.877	0.000381	-0.000465	0.000000
734	0	0	1	0.000	-0.895	3.447	-0.000849	0.000447	0.000000
736	0	0	1	-0.000	-2.374	8.114	-0.001247	0.001187	0.000000
738	0	0	1	0.000	-5.131	11.149	-0.001072	0.002566	0.000000
740	0	0	1	0.000	-7.588	13.707	-0.000695	0.003794	0.000000
742	1	0	1	1.600	-9.399	15.881	0.000000	0.004700	0.000000
744	0	0	1	-0.000	-10.142	16.890	0.000396	0.005071	0.000000
746	0	0	1	-0.000	-8.694	14.323	0.001112	0.004347	0.000000
748	0	0	1	0.000	-5.389	8.445	0.001774	0.002694	0.000000

SUM OF REACTIVE FORCES : (X) = 0.294 (Y) = 41.515 (Z) = 200.514

COMBINATION NO : 11

NODE NO	RESTRAINTS			SUPPORT X[T]	REACTIONS Y[T]	FORCES Z[T]	DISPLACEMENTS		
	IXD	IYD	IZD				X[m]	Y[m]	Z[m]
1	0	0	1	0.000	3.522	1.491	-0.001338	-0.001761	0.000000
3	0	0	1	0.000	9.649	7.852	-0.001121	-0.004824	0.000000
5	0	0	1	-0.000	18.914	15.303	-0.000611	-0.009457	0.000000
7	0	0	1	0.000	25.108	24.629	0.000005	-0.012554	0.000000
9	1	0	1	-10.217	28.917	30.380	0.000000	-0.014459	0.000000
11	0	0	1	0.000	29.756	36.441	0.002980	-0.014878	0.000000
13	0	0	1	0.000	27.672	35.118	0.004806	-0.013836	0.000000
15	0	0	1	-0.000	22.668	29.418	0.006620	-0.011334	0.000000
17	0	0	1	0.000	14.271	20.616	0.007594	-0.007136	0.000000
19	0	0	1	0.000	7.549	11.045	0.007422	-0.003774	0.000000
22	0	0	1	0.000	-0.361	2.698	0.007998	0.000180	0.000000
126	1	1	1	0.000	0.000	7.707	0.000000	0.000000	0.000000
127	1	1	1	0.000	0.000	8.875	0.000000	0.000000	0.000000
251	1	1	1	0.000	0.000	19.674	0.000000	0.000000	0.000000
252	1	1	1	0.000	0.000	18.049	0.000000	0.000000	0.000000
376	1	1	1	0.000	0.000	20.139	0.000000	0.000000	0.000000
377	1	1	1	0.000	0.000	30.936	0.000000	0.000000	0.000000
501	1	1	1	0.000	0.000	10.026	0.000000	0.000000	0.000000
620	0	0	1	0.000	-0.000	31.309	0.000182	0.008464	0.000000
625	0	0	1	0.000	0.000	8.652	0.002921	0.009361	0.000000
734	0	0	1	0.000	-3.116	5.494	-0.000561	0.001558	0.000000
736	0	0	1	-0.000	-10.691	16.107	-0.000843	0.005346	0.000000
738	0	0	1	-0.000	-19.587	25.767	-0.000733	0.009793	0.000000
740	0	0	1	0.000	-27.735	34.593	-0.000313	0.013867	0.000000
742	1	0	1	-4.046	-33.875	41.747	0.000000	0.016938	0.000000
744	0	0	1	-0.000	-36.740	45.519	0.002223	0.018370	0.000000
746	0	0	1	-0.000	-33.183	38.607	0.004439	0.016592	0.000000
748	0	0	1	-0.000	-20.539	25.413	0.008329	0.010269	0.000000

SUM OF REACTIVE FORCES : (X) = -14.263 (Y) = 2.200 (Z) = 603.604

COMBINATION NO : 12

NODE NO	RESTRAINTS			SUPPORT X[T]	REACTIONS Y[T]	FORCES Z[T]	DISPLACEMENTS		
	IXD	IYD	IZD				X[m]	Y[m]	Z[m]
1	0	0	1	0.000	4.271	1.725	-0.004168	-0.002136	0.000000
3	0	0	1	0.000	10.132	7.759	-0.003801	-0.005066	0.000000
5	0	0	1	-0.000	19.289	15.180	-0.002931	-0.009644	0.000000
7	0	0	1	0.000	25.659	25.384	-0.001860	-0.012830	0.000000
9	1	0	1	2.819	28.885	30.344	0.000000	-0.014442	0.000000
11	0	0	1	0.000	29.155	35.522	0.000942	-0.014577	0.000000
13	0	0	1	0.000	27.267	35.233	0.002187	-0.013634	0.000000
15	0	0	1	-0.000	22.324	29.455	0.003548	-0.011162	0.000000
17	0	0	1	0.000	13.909	20.659	0.004200	-0.006955	0.000000
19	0	0	1	0.000	7.162	11.143	0.003742	-0.003581	0.000000
22	0	0	1	0.000	-0.943	2.533	0.004090	0.000472	0.000000
126	1	1	1	0.000	0.000	7.740	0.000000	0.000000	0.000000
127	1	1	1	0.000	0.000	8.815	0.000000	0.000000	0.000000
251	1	1	1	0.000	0.000	19.777	0.000000	0.000000	0.000000
252	1	1	1	0.000	0.000	17.948	0.000000	0.000000	0.000000
376	1	1	1	0.000	0.000	20.353	0.000000	0.000000	0.000000
377	1	1	1	0.000	0.000	30.730	0.000000	0.000000	0.000000
501	1	1	1	0.000	0.000	10.502	0.000000	0.000000	0.000000
620	0	0	1	0.000	-0.000	30.823	-0.004765	0.008704	0.000000
625	0	0	1	0.000	0.000	8.525	-0.002313	0.009694	0.000000
734	0	0	1	-0.000	-3.443	6.215	-0.004337	0.001721	0.000000
736	0	0	1	0.000	-10.972	16.466	-0.004291	0.005486	0.000000
738	0	0	1	0.000	-19.931	26.380	-0.003771	0.009966	0.000000
740	0	0	1	0.000	-28.551	35.100	-0.002645	0.014275	0.000000
742	1	0	1	11.182	-33.996	41.876	0.000000	0.016998	0.000000
744	0	0	1	-0.000	-35.926	45.054	-0.000123	0.017963	0.000000
746	0	0	1	-0.000	-32.743	37.993	0.001419	0.016372	0.000000
748	0	0	1	0.000	-19.967	24.371	0.004957	0.009984	0.000000

SUM OF REACTIVE FORCES : (X) = 14.002 (Y) = 1.581 (Z) = 603.604  
 COMBINATION NO : 13

NODE NO	RESTRAINTS			SUPPORT X[T]	REACTIONS Y[T]	FORCES Z[T]	DISPLACEMENTS		
	IXD	IYD	IZD				X[m]	Y[m]	Z[m]
1	0	0	1	0.000	3.403	1.672	-0.003126	-0.001702	0.000000
3	0	0	1	0.000	9.294	7.667	-0.002825	-0.004647	0.000000
5	0	0	1	-0.000	18.476	15.183	-0.002023	-0.009238	0.000000
7	0	0	1	0.000	24.742	24.981	-0.001065	-0.012371	0.000000
9	1	0	1	-3.459	28.241	30.317	0.000000	-0.014121	0.000000
11	0	0	1	0.000	28.752	35.934	0.002026	-0.014376	0.000000
13	0	0	1	0.000	26.772	35.132	0.003653	-0.013386	0.000000
15	0	0	1	-0.000	21.822	29.393	0.005338	-0.010911	0.000000
17	0	0	1	0.000	13.416	20.595	0.006254	-0.006708	0.000000
19	0	0	1	0.000	6.660	10.969	0.006054	-0.003330	0.000000
22	0	0	1	0.000	-1.269	2.640	0.006538	0.000634	0.000000
126	1	1	1	0.000	0.000	7.861	0.000000	0.000000	0.000000
127	1	1	1	0.000	0.000	8.962	0.000000	0.000000	0.000000
251	1	1	1	0.000	0.000	19.803	0.000000	0.000000	0.000000
252	1	1	1	0.000	0.000	18.055	0.000000	0.000000	0.000000
376	1	1	1	0.000	0.000	20.311	0.000000	0.000000	0.000000
377	1	1	1	0.000	0.000	30.963	0.000000	0.000000	0.000000
501	1	1	1	0.000	0.000	10.300	0.000000	0.000000	0.000000
620	0	0	1	0.000	-0.000	30.850	-0.001867	0.008924	0.000000
625	0	0	1	0.000	0.000	8.685	0.000881	0.009940	0.000000
734	0	0	1	-0.000	-3.286	5.951	-0.002974	0.001643	0.000000
736	0	0	1	-0.000	-10.878	16.266	-0.002943	0.005439	0.000000
738	0	0	1	0.000	-19.755	26.033	-0.002511	0.009877	0.000000
740	0	0	1	0.000	-28.137	34.810	-0.001618	0.014068	0.000000
742	1	0	1	3.719	-33.928	41.776	0.000000	0.016964	0.000000
744	0	0	1	-0.000	-36.328	45.249	0.001142	0.018164	0.000000
746	0	0	1	-0.000	-33.007	38.258	0.003125	0.016503	0.000000
748	0	0	1	-0.000	-20.273	24.986	0.006970	0.010136	0.000000

SUM OF REACTIVE FORCES : (X) = 0.260 (Y) = -5.281 (Z) = 603.604

COMBINATION NO : 14

NODE NO	RESTRAINTS			SUPPORT X[T]	REACTIONS Y[T]	FORCES Z[T]	DISPLACEMENTS		
	IXD	IYD	IZD				X[m]	Y[m]	Z[m]
1	0	0	1	0.000	5.699	1.885	-0.003588	-0.002850	0.000000
3	0	0	1	0.000	12.302	8.125	-0.003085	-0.006151	0.000000
5	0	0	1	-0.000	21.932	15.511	-0.002156	-0.010966	0.000000
7	0	0	1	0.000	28.445	25.060	-0.001104	-0.014223	0.000000
9	1	0	1	-3.868	31.934	30.403	0.000000	-0.015967	0.000000
11	0	0	1	0.000	32.631	35.930	0.002167	-0.016316	0.000000
13	0	0	1	0.000	30.366	35.163	0.003883	-0.015183	0.000000
15	0	0	1	-0.000	24.936	29.493	0.005617	-0.012468	0.000000
17	0	0	1	0.000	16.133	20.698	0.006553	-0.008066	0.000000
19	0	0	1	0.000	8.896	11.236	0.006368	-0.004448	0.000000
22	0	0	1	0.000	0.341	2.778	0.007030	-0.000170	0.000000
126	1	1	1	0.000	0.000	7.503	0.000000	0.000000	0.000000
127	1	1	1	0.000	0.000	8.798	0.000000	0.000000	0.000000
251	1	1	1	0.000	0.000	19.464	0.000000	0.000000	0.000000
252	1	1	1	0.000	0.000	18.017	0.000000	0.000000	0.000000
376	1	1	1	0.000	0.000	19.776	0.000000	0.000000	0.000000
377	1	1	1	0.000	0.000	30.909	0.000000	0.000000	0.000000
501	1	1	1	0.000	0.000	10.669	0.000000	0.000000	0.000000
620	0	0	1	0.000	-0.000	33.137	-0.002180	0.006697	0.000000
625	0	0	1	-0.000	0.000	9.428	0.000913	0.007139	0.000000
734	0	0	1	-0.000	-2.972	7.103	-0.002660	0.001486	0.000000
736	0	0	1	-0.000	-9.689	18.724	-0.003090	0.004844	0.000000
738	0	0	1	0.000	-18.644	28.537	-0.002677	0.009322	0.000000
740	0	0	1	0.000	-26.918	37.149	-0.001740	0.013459	0.000000
742	1	0	1	4.128	-32.693	44.084	0.000000	0.016347	0.000000
744	0	0	1	-0.000	-35.070	47.479	0.001119	0.017535	0.000000
746	0	0	1	-0.000	-31.423	40.182	0.003131	0.015711	0.000000
748	0	0	1	-0.000	-19.398	25.420	0.006462	0.009699	0.000000

SUM OF REACTIVE FORCES : (X) = 0.260 (Y) = 36.807 (Z) = 622.663

COMBINATION NO : 15

NODE NO	RESTRAINTS			SUPPORT X[T]	REACTIONS Y[T]	FORCES Z[T]	DISPLACEMENTS		
	IXD	IYD	IZD				X[m]	Y[m]	Z[m]
1	0	0	1	0.000	3.077	1.074	-0.006520	-0.001538	0.000000
3	0	0	1	0.000	6.905	4.835	-0.005371	-0.003452	0.000000
5	0	0	1	0.000	12.564	9.329	-0.003641	-0.006282	0.000000
7	0	0	1	0.000	16.428	15.335	-0.001821	-0.008214	0.000000
9	1	0	1	-2.666	18.624	18.786	0.000000	-0.009312	0.000000
11	0	0	1	0.000	19.107	22.377	0.002571	-0.009553	0.000000
13	0	0	1	0.000	17.929	21.857	0.004856	-0.008965	0.000000
15	0	0	1	-0.000	14.748	18.151	0.007200	-0.007374	0.000000
17	0	0	1	0.000	9.203	12.519	0.009042	-0.004602	0.000000
19	0	0	1	0.000	4.658	6.602	0.010148	-0.002329	0.000000
22	0	0	1	0.000	-0.372	1.566	0.011983	0.000186	0.000000
126	1	1	1	0.000	0.000	4.637	0.000000	0.000000	0.000000
127	1	1	1	0.000	0.000	5.337	0.000000	0.000000	0.000000
251	1	1	1	0.000	0.000	11.871	0.000000	0.000000	0.000000
252	1	1	1	0.000	0.000	10.652	0.000000	0.000000	0.000000
376	1	1	1	0.000	0.000	11.966	0.000000	0.000000	0.000000
377	1	1	1	0.000	0.000	19.398	0.000000	0.000000	0.000000
501	1	1	1	0.000	0.000	4.453	0.000000	0.000000	0.000000
620	0	0	1	0.000	-0.000	15.517	0.003354	0.012350	0.000000
625	0	0	1	0.000	0.000	5.842	0.008480	0.014096	0.000000
734	0	0	1	0.000	-2.834	4.861	-0.006685	0.001417	0.000000
736	0	0	1	0.000	-7.750	11.692	-0.005453	0.003875	0.000000
738	0	0	1	0.000	-12.937	17.287	-0.003939	0.006468	0.000000
740	0	0	1	0.000	-17.945	22.413	-0.002200	0.008973	0.000000
742	1	0	1	2.666	-21.508	26.635	0.000000	0.010754	0.000000
744	0	0	1	0.000	-23.221	29.044	0.001772	0.011610	0.000000

746	0	0	1	-0.000	-21.952	25.688	0.004134	0.010976	0.000000
748	0	0	1	-0.000	-14.728	18.433	0.007972	0.007364	0.000000

SUM OF REACTIVE FORCES : (X) = 0.000 (Y) = -0.002 (Z) = 378.159  
 COMBINATION NO : 16

NODE NO	RESTRAINTS			SUPPORT X[T]	REACTIONS Y[T]	FORCES Z[T]	DISPLACEMENTS		
	IXD	IYD	IZD				X[m]	Y[m]	Z[m]
1	0	0	1	0.000	1.722	0.954	0.002935	-0.000861	0.000000
3	0	0	1	-0.000	5.148	4.556	0.002180	-0.002574	0.000000
5	0	0	1	-0.000	10.741	9.097	0.001350	-0.005370	0.000000
7	0	0	1	0.000	14.749	15.287	0.000625	-0.007374	0.000000
9	1	0	1	-2.097	17.089	18.819	0.000000	-0.008544	0.000000
11	0	0	1	0.000	17.408	22.521	-0.000025	-0.008704	0.000000
13	0	0	1	0.000	16.054	22.026	-0.000298	-0.008027	0.000000
15	0	0	1	0.000	12.799	18.290	-0.000580	-0.006400	0.000000
17	0	0	1	0.000	7.599	12.663	-0.001357	-0.003799	0.000000
19	0	0	1	0.000	3.621	6.568	-0.002805	-0.001810	0.000000
22	0	0	1	-0.000	-0.970	1.538	-0.004137	0.000485	0.000000
126	1	1	1	0.000	0.000	4.714	0.000000	0.000000	0.000000
127	1	1	1	0.000	0.000	5.399	0.000000	0.000000	0.000000
251	1	1	1	0.000	0.000	11.978	0.000000	0.000000	0.000000
252	1	1	1	0.000	0.000	11.191	0.000000	0.000000	0.000000
376	1	1	1	0.000	0.000	12.545	0.000000	0.000000	0.000000
377	1	1	1	0.000	0.000	18.480	0.000000	0.000000	0.000000
501	1	1	1	0.000	0.000	8.290	0.000000	0.000000	0.000000
620	0	0	1	-0.000	-0.000	23.228	-0.006082	-0.001548	0.000000
625	0	0	1	-0.000	-0.000	5.069	-0.007839	-0.002037	0.000000
734	0	0	1	0.000	-1.378	3.457	0.003601	0.000689	0.000000
736	0	0	1	0.000	-5.396	10.086	0.002074	0.002698	0.000000
738	0	0	1	-0.000	-11.167	16.424	0.000977	0.005583	0.000000
740	0	0	1	0.000	-16.569	22.192	0.000243	0.008285	0.000000
742	1	0	1	2.096	-20.360	26.807	0.000000	0.010180	0.000000
744	0	0	1	-0.000	-21.759	28.848	-0.000441	0.010880	0.000000
746	0	0	1	-0.000	-18.786	23.551	-0.000396	0.009393	0.000000
748	0	0	1	0.000	-10.547	13.574	0.000212	0.005273	0.000000

SUM OF REACTIVE FORCES : (X) = -0.000 (Y) = -0.002 (Z) = 378.154

COMBINATION NO : 17

NODE NO	RESTRAINTS			SUPPORT X[T]	REACTIONS Y[T]	FORCES Z[T]	DISPLACEMENTS		
	IXD	IYD	IZD				X[m]	Y[m]	Z[m]
1	0	0	1	0.000	3.572	1.258	-0.006872	-0.001786	0.000000
3	0	0	1	0.000	8.312	5.925	-0.005693	-0.004156	0.000000
5	0	0	1	0.000	15.405	11.605	-0.003876	-0.007703	0.000000
7	0	0	1	0.000	20.217	19.073	-0.001946	-0.010108	0.000000
9	1	0	1	-3.216	22.913	23.268	0.000000	-0.011457	0.000000
11	0	0	1	0.000	23.449	27.643	0.002847	-0.011725	0.000000
13	0	0	1	0.000	21.957	27.006	0.005341	-0.010979	0.000000
15	0	0	1	-0.000	18.040	22.495	0.007902	-0.009020	0.000000
17	0	0	1	0.000	11.242	15.591	0.009845	-0.005621	0.000000
19	0	0	1	0.000	5.688	8.232	0.010882	-0.002844	0.000000
22	0	0	1	0.000	-0.561	1.918	0.012766	0.000281	0.000000
126	1	1	1	0.000	0.000	5.675	0.000000	0.000000	0.000000
127	1	1	1	0.000	0.000	6.543	0.000000	0.000000	0.000000
251	1	1	1	0.000	0.000	14.720	0.000000	0.000000	0.000000
252	1	1	1	0.000	0.000	13.252	0.000000	0.000000	0.000000
376	1	1	1	0.000	0.000	14.844	0.000000	0.000000	0.000000
377	1	1	1	0.000	0.000	23.765	0.000000	0.000000	0.000000
501	1	1	1	0.000	0.000	5.713	0.000000	0.000000	0.000000
620	0	0	1	0.000	-0.000	20.108	0.002979	0.013682	0.000000
625	0	0	1	0.000	0.000	7.034	0.008507	0.015433	0.000000
734	0	0	1	0.000	-3.183	5.468	-0.007095	0.001591	0.000000
736	0	0	1	0.000	-9.288	13.909	-0.005862	0.004644	0.000000
738	0	0	1	0.000	-15.877	21.106	-0.004290	0.007939	0.000000
740	0	0	1	0.000	-22.157	27.560	-0.002425	0.011079	0.000000
742	1	0	1	3.216	-26.569	32.799	0.000000	0.013284	0.000000
744	0	0	1	0.000	-28.622	35.708	0.001925	0.014311	0.000000
746	0	0	1	-0.000	-26.849	31.250	0.004565	0.013425	0.000000
748	0	0	1	-0.000	-17.691	21.978	0.008987	0.008846	0.000000

SUM OF REACTIVE FORCES : (X) = 0.000 (Y) = -0.002 (Z) = 465.445

COMBINATION NO : 18

NODE NO	RESTRAINTS			SUPPORT X[T]	REACTIONS Y[T]	FORCES Z[T]	DISPLACEMENTS		
	IXD	IYD	IZD				X[m]	Y[m]	Z[m]
1	0	0	1	0.000	2.217	1.138	0.002582	-0.001109	0.000000
3	0	0	1	-0.000	6.555	5.646	0.001857	-0.003277	0.000000
5	0	0	1	-0.000	13.582	11.373	0.001114	-0.006791	0.000000
7	0	0	1	0.000	18.538	19.026	0.000500	-0.009269	0.000000
9	1	0	1	-2.646	21.378	23.300	0.000000	-0.010689	0.000000
11	0	0	1	0.000	21.751	27.787	0.000251	-0.010876	0.000000
13	0	0	1	0.000	20.082	27.174	0.000188	-0.010041	0.000000
15	0	0	1	0.000	16.091	22.634	0.000122	-0.008046	0.000000
17	0	0	1	0.000	9.637	15.734	-0.000554	-0.004818	0.000000
19	0	0	1	0.000	4.651	8.198	-0.002071	-0.002325	0.000000
22	0	0	1	-0.000	-1.160	1.890	-0.003354	0.000580	0.000000
126	1	1	1	0.000	0.000	5.752	0.000000	0.000000	0.000000
127	1	1	1	0.000	0.000	6.604	0.000000	0.000000	0.000000
251	1	1	1	0.000	0.000	14.828	0.000000	0.000000	0.000000
252	1	1	1	0.000	0.000	13.791	0.000000	0.000000	0.000000
376	1	1	1	0.000	0.000	15.424	0.000000	0.000000	0.000000
377	1	1	1	0.000	0.000	22.847	0.000000	0.000000	0.000000
501	1	1	1	0.000	0.000	9.549	0.000000	0.000000	0.000000
620	0	0	1	-0.000	-0.000	27.819	-0.006456	-0.000216	0.000000
625	0	0	1	-0.000	-0.000	6.261	-0.007813	-0.000700	0.000000
734	0	0	1	0.000	-1.727	4.064	0.003191	0.000863	0.000000
736	0	0	1	0.000	-6.934	12.303	0.001665	0.003467	0.000000
738	0	0	1	-0.000	-14.107	20.244	0.000625	0.007053	0.000000
740	0	0	1	0.000	-20.782	27.339	0.000018	0.010391	0.000000

742	1	0	1	2.645	-25.421	32.971	0.000000	0.012711	0.000000
744	0	0	1	-0.000	-27.161	35.513	-0.000288	0.013580	0.000000
746	0	0	1	-0.000	-23.684	29.113	0.000035	0.011842	0.000000
748	0	0	1	0.000	-13.510	17.118	0.001228	0.006755	0.000000

SUM OF REACTIVE FORCES : (X) = -0.000 (Y) = -0.003 (Z) = 465.439  
COMBINATION NO : 19

NODE NO	RESTRAINTS			SUPPORT X[T]	REACTIONS FORCES			DISPLACEMENTS		
	IXD	IYD	IZD		Y[T]	Z[T]	X[m]	Y[m]	Z[m]	
1	0	0	1	0.000	4.769	1.955	-0.007493	-0.002385	0.000000	
3	0	0	1	0.000	11.778	9.156	-0.006323	-0.005889	0.000000	
5	0	0	1	-0.000	22.358	17.769	-0.004343	-0.011179	0.000000	
7	0	0	1	0.000	29.420	28.898	-0.002193	-0.014710	0.000000	
9	1	0	1	-4.550	33.313	34.926	0.000000	-0.016656	0.000000	
11	0	0	1	0.000	33.912	41.284	0.003459	-0.016956	0.000000	
13	0	0	1	0.000	31.675	40.339	0.006405	-0.015838	0.000000	
15	0	0	1	-0.000	25.999	33.821	0.009443	-0.013000	0.000000	
17	0	0	1	0.000	16.182	23.777	0.011584	-0.008091	0.000000	
19	0	0	1	0.000	8.237	12.831	0.012396	-0.004119	0.000000	
22	0	0	1	0.000	-1.053	3.058	0.014309	0.000527	0.000000	
126	1	1	1	0.000	0.000	9.132	0.000000	0.000000	0.000000	
127	1	1	1	0.000	0.000	10.448	0.000000	0.000000	0.000000	
251	1	1	1	0.000	0.000	22.982	0.000000	0.000000	0.000000	
252	1	1	1	0.000	0.000	20.764	0.000000	0.000000	0.000000	
376	1	1	1	0.000	0.000	23.195	0.000000	0.000000	0.000000	
377	1	1	1	0.000	0.000	36.406	0.000000	0.000000	0.000000	
501	1	1	1	0.000	0.000	10.018	0.000000	0.000000	0.000000	
620	0	0	1	0.000	-0.000	32.966	0.001595	0.016546	0.000000	
625	0	0	1	0.000	0.000	10.856	0.008023	0.018723	0.000000	
734	0	0	1	-0.000	-4.228	7.442	-0.007494	0.002114	0.000000	
736	0	0	1	-0.000	-13.009	19.501	-0.006447	0.006505	0.000000	
738	0	0	1	0.000	-22.914	30.270	-0.004893	0.011457	0.000000	
740	0	0	1	0.000	-32.305	39.962	-0.002860	0.016152	0.000000	
742	1	0	1	4.550	-38.824	47.741	0.000000	0.019412	0.000000	
744	0	0	1	-0.000	-41.719	51.887	0.002193	0.020859	0.000000	
746	0	0	1	-0.000	-38.697	44.843	0.005399	0.019349	0.000000	
748	0	0	1	-0.000	-24.898	30.755	0.011057	0.012449	0.000000	

SUM OF REACTIVE FORCES : (X) = -0.000 (Y) = -0.004 (Z) = 696.980

COMBINATION NO : 20

NODE NO	RESTRAINTS			SUPPORT X[T]	REACTIONS FORCES			DISPLACEMENTS		
	IXD	IYD	IZD		Y[T]	Z[T]	X[m]	Y[m]	Z[m]	
1	0	0	1	0.000	3.568	1.849	0.000890	-0.001784	0.000000	
3	0	0	1	0.000	10.220	8.909	0.000372	-0.005110	0.000000	
5	0	0	1	-0.000	20.741	17.563	0.000082	-0.010370	0.000000	
7	0	0	1	0.000	27.931	28.856	-0.000024	-0.013965	0.000000	
9	1	0	1	-4.045	31.952	34.955	0.000000	-0.015976	0.000000	
11	0	0	1	0.000	32.406	41.412	0.001157	-0.016203	0.000000	
13	0	0	1	0.000	30.013	40.488	0.001836	-0.015006	0.000000	
15	0	0	1	-0.000	24.272	33.944	0.002545	-0.012136	0.000000	
17	0	0	1	0.000	14.759	23.904	0.002363	-0.007380	0.000000	
19	0	0	1	0.000	7.318	12.801	0.000911	-0.003659	0.000000	
22	0	0	1	-0.000	-1.584	3.033	0.000016	0.000792	0.000000	
126	1	1	1	0.000	0.000	9.200	0.000000	0.000000	0.000000	
127	1	1	1	0.000	0.000	10.502	0.000000	0.000000	0.000000	
251	1	1	1	0.000	0.000	23.077	0.000000	0.000000	0.000000	
252	1	1	1	0.000	0.000	21.241	0.000000	0.000000	0.000000	
376	1	1	1	0.000	0.000	23.708	0.000000	0.000000	0.000000	
377	1	1	1	0.000	0.000	35.592	0.000000	0.000000	0.000000	
501	1	1	1	0.000	0.000	13.420	0.000000	0.000000	0.000000	
620	0	0	1	-0.000	-0.000	39.803	-0.006771	0.004224	0.000000	
625	0	0	1	-0.000	-0.000	10.171	-0.006447	0.004418	0.000000	
734	0	0	1	-0.000	-2.937	6.197	0.001626	0.001468	0.000000	
736	0	0	1	-0.000	-10.922	18.077	0.000227	0.005461	0.000000	
738	0	0	1	-0.000	-21.344	29.506	-0.000534	0.010672	0.000000	
740	0	0	1	0.000	-31.085	39.765	-0.000694	0.015543	0.000000	
742	1	0	1	4.044	-37.807	47.894	0.000000	0.018903	0.000000	
744	0	0	1	-0.000	-40.423	51.713	0.000230	0.020211	0.000000	
746	0	0	1	-0.000	-35.891	42.948	0.001383	0.017945	0.000000	
748	0	0	1	0.000	-21.192	26.446	0.004177	0.010596	0.000000	

SUM OF REACTIVE FORCES : (X) = -0.000 (Y) = -0.004 (Z) = 696.975

COMBINATION NO : 21

NODE NO	RESTRAINTS			SUPPORT X[T]	REACTIONS FORCES			DISPLACEMENTS		
	IXD	IYD	IZD		Y[T]	Z[T]	X[m]	Y[m]	Z[m]	
1	0	0	1	0.000	3.492	1.417	-0.005548	-0.001746	0.000000	
3	0	0	1	0.000	8.597	6.644	-0.004676	-0.004299	0.000000	
5	0	0	1	-0.000	16.308	12.912	-0.003211	-0.008154	0.000000	
7	0	0	1	0.000	21.476	21.042	-0.001621	-0.010738	0.000000	
9	1	0	1	-3.326	24.345	25.482	0.000000	-0.012173	0.000000	
11	0	0	1	0.000	24.807	30.153	0.002548	-0.012403	0.000000	
13	0	0	1	0.000	23.172	29.457	0.004723	-0.011586	0.000000	
15	0	0	1	-0.000	19.007	24.659	0.006964	-0.009503	0.000000	
17	0	0	1	0.000	11.818	17.295	0.008548	-0.005909	0.000000	
19	0	0	1	0.000	6.007	9.307	0.009163	-0.003004	0.000000	
22	0	0	1	0.000	-0.759	2.213	0.010585	0.000379	0.000000	
126	1	1	1	0.000	0.000	6.602	0.000000	0.000000	0.000000	
127	1	1	1	0.000	0.000	7.558	0.000000	0.000000	0.000000	
251	1	1	1	0.000	0.000	16.641	0.000000	0.000000	0.000000	
252	1	1	1	0.000	0.000	15.032	0.000000	0.000000	0.000000	
376	1	1	1	0.000	0.000	16.795	0.000000	0.000000	0.000000	
377	1	1	1	0.000	0.000	26.398	0.000000	0.000000	0.000000	
501	1	1	1	0.000	0.000	7.221	0.000000	0.000000	0.000000	
620	0	0	1	0.000	-0.000	23.897	0.001266	0.012184	0.000000	
625	0	0	1	0.000	0.000	7.873	0.006003	0.013763	0.000000	
734	0	0	1	-0.000	-3.093	5.439	-0.005565	0.001546	0.000000	
736	0	0	1	-0.000	-9.503	14.247	-0.004776	0.004751	0.000000	

738	0	0	1	0.000	-16.727	22.103	-0.003618	0.008363	0.000000
740	0	0	1	0.000	-23.589	29.182	-0.002112	0.011795	0.000000
742	1	0	1	3.326	-28.363	34.871	0.000000	0.014181	0.000000
744	0	0	1	-0.000	-30.487	37.907	0.001624	0.015243	0.000000
746	0	0	1	-0.000	-28.292	32.781	0.003989	0.014146	0.000000
748	0	0	1	-0.000	-18.219	22.509	0.008149	0.009110	0.000000

SUM OF REACTIVE FORCES : (X) = -0.000 (Y) = -0.003 (Z) = 507.636  
COMBINATION NO : 22

NODE NO	RESTRAINTS			SUPPORT X[T]	REACTIONS FORCES			DISPLACEMENTS		
	IXD	IYD	IZD		Y[T]	Z[T]	X[m]	Y[m]	Z[m]	
1	0	0	1	0.000	2.589	1.337	0.000755	-0.001295	0.000000	
3	0	0	1	0.000	7.426	6.458	0.000358	-0.003713	0.000000	
5	0	0	1	-0.000	15.092	12.757	0.000117	-0.007546	0.000000	
7	0	0	1	0.000	20.356	21.011	0.000009	-0.010178	0.000000	
9	1	0	1	-2.946	23.322	25.504	0.000000	-0.011661	0.000000	
11	0	0	1	0.000	23.674	30.249	0.000818	-0.011837	0.000000	
13	0	0	1	0.000	21.922	29.569	0.001287	-0.010961	0.000000	
15	0	0	1	-0.000	17.707	24.752	0.001778	-0.008854	0.000000	
17	0	0	1	0.000	10.748	17.391	0.001616	-0.005374	0.000000	
19	0	0	1	0.000	5.316	9.285	0.000528	-0.002658	0.000000	
22	0	0	1	-0.000	-1.158	2.194	-0.000161	0.000579	0.000000	
126	1	1	1	0.000	0.000	6.654	0.000000	0.000000	0.000000	
127	1	1	1	0.000	0.000	7.599	0.000000	0.000000	0.000000	
251	1	1	1	0.000	0.000	16.713	0.000000	0.000000	0.000000	
252	1	1	1	0.000	0.000	15.391	0.000000	0.000000	0.000000	
376	1	1	1	0.000	0.000	17.181	0.000000	0.000000	0.000000	
377	1	1	1	0.000	0.000	25.786	0.000000	0.000000	0.000000	
501	1	1	1	0.000	0.000	9.779	0.000000	0.000000	0.000000	
620	0	0	1	-0.000	-0.000	29.038	-0.005024	0.002919	0.000000	
625	0	0	1	-0.000	-0.000	7.357	-0.004877	0.003007	0.000000	
734	0	0	1	-0.000	-2.122	4.504	0.001292	0.001061	0.000000	
736	0	0	1	-0.000	-7.933	13.176	0.000242	0.003967	0.000000	
738	0	0	1	-0.000	-15.547	21.528	-0.000341	0.007773	0.000000	
740	0	0	1	0.000	-22.672	29.035	-0.000483	0.011336	0.000000	
742	1	0	1	2.946	-27.598	34.986	0.000000	0.013799	0.000000	
744	0	0	1	-0.000	-29.513	37.776	0.000148	0.014756	0.000000	
746	0	0	1	-0.000	-26.182	31.357	0.000969	0.013091	0.000000	
748	0	0	1	0.000	-15.432	19.269	0.002976	0.007716	0.000000	

SUM OF REACTIVE FORCES : (X) = -0.000 (Y) = -0.003 (Z) = 507.633

COMBINATION NO : 23

NODE NO	RESTRAINTS			SUPPORT X[T]	REACTIONS FORCES			DISPLACEMENTS		
	IXD	IYD	IZD		Y[T]	Z[T]	X[m]	Y[m]	Z[m]	
1	0	0	1	-0.000	1.757	0.405	-0.003575	-0.000879	0.000000	
3	0	0	1	0.000	3.960	2.473	-0.002693	-0.001980	0.000000	
5	0	0	1	-0.000	6.934	4.667	-0.001554	-0.003467	0.000000	
7	0	0	1	0.000	8.898	7.285	-0.000420	-0.004449	0.000000	
9	1	0	1	-7.963	10.392	9.563	0.000000	-0.005196	0.000000	
11	0	0	1	0.000	11.078	11.908	0.002780	-0.005539	0.000000	
13	0	0	1	0.000	10.435	11.127	0.004684	-0.005218	0.000000	
15	0	0	1	-0.000	8.753	9.173	0.006564	-0.004376	0.000000	
17	0	0	1	0.000	5.829	6.179	0.008120	-0.002914	0.000000	
19	0	0	1	-0.000	3.343	3.196	0.009271	-0.001672	0.000000	
22	0	0	1	0.000	0.719	0.832	0.010931	-0.000359	0.000000	
126	1	1	1	0.000	0.000	2.023	0.000000	0.000000	0.000000	
127	1	1	1	0.000	0.000	2.409	0.000000	0.000000	0.000000	
251	1	1	1	0.000	0.000	5.562	0.000000	0.000000	0.000000	
252	1	1	1	0.000	0.000	5.020	0.000000	0.000000	0.000000	
376	1	1	1	0.000	0.000	5.645	0.000000	0.000000	0.000000	
377	1	1	1	0.000	0.000	9.583	0.000000	0.000000	0.000000	
501	1	1	1	0.000	0.000	1.396	0.000000	0.000000	0.000000	
620	0	0	1	0.000	-0.000	6.073	0.005928	0.008301	0.000000	
625	0	0	1	0.000	0.000	2.583	0.009609	0.009477	0.000000	
734	0	0	1	0.000	-1.763	2.424	-0.003346	0.000881	0.000000	
736	0	0	1	-0.000	-4.711	6.217	-0.002340	0.002356	0.000000	
738	0	0	1	0.000	-7.304	8.934	-0.001313	0.003652	0.000000	
740	0	0	1	0.000	-9.625	11.597	-0.000356	0.004813	0.000000	
742	1	0	1	-6.300	-11.808	13.945	0.000000	0.005904	0.000000	
744	0	0	1	0.000	-13.227	15.569	0.002494	0.006613	0.000000	
746	0	0	1	-0.000	-12.608	14.169	0.004461	0.006304	0.000000	
748	0	0	1	-0.000	-8.849	10.999	0.007229	0.004424	0.000000	

SUM OF REACTIVE FORCES : (X) = -14.262 (Y) = 2.202 (Z) = 190.956

COMBINATION NO : 24

NODE NO	RESTRAINTS			SUPPORT X[T]	REACTIONS FORCES			DISPLACEMENTS		
	IXD	IYD	IZD		Y[T]	Z[T]	X[m]	Y[m]	Z[m]	
1	0	0	1	0.000	2.507	0.639	-0.006406	-0.001254	0.000000	
3	0	0	1	0.000	4.443	2.380	-0.005373	-0.002222	0.000000	
5	0	0	1	0.000	7.309	4.544	-0.003875	-0.003655	0.000000	
7	0	0	1	0.000	9.449	8.040	-0.002285	-0.004724	0.000000	
9	1	0	1	5.074	10.359	9.526	0.000000	-0.005179	0.000000	
11	0	0	1	0.000	10.476	10.989	0.000742	-0.005238	0.000000	
13	0	0	1	0.000	10.031	11.242	0.002065	-0.005015	0.000000	
15	0	0	1	-0.000	8.408	9.210	0.003492	-0.004204	0.000000	
17	0	0	1	0.000	5.466	6.222	0.004726	-0.002733	0.000000	
19	0	0	1	0.000	2.956	3.293	0.005591	-0.001478	0.000000	
22	0	0	1	0.000	0.136	0.667	0.007023	-0.000068	0.000000	
126	1	1	1	0.000	0.000	2.056	0.000000	0.000000	0.000000	
127	1	1	1	0.000	0.000	2.349	0.000000	0.000000	0.000000	
251	1	1	1	0.000	0.000	5.665	0.000000	0.000000	0.000000	
252	1	1	1	0.000	0.000	4.919	0.000000	0.000000	0.000000	
376	1	1	1	0.000	0.000	5.859	0.000000	0.000000	0.000000	
377	1	1	1	0.000	0.000	9.378	0.000000	0.000000	0.000000	
501	1	1	1	0.000	0.000	1.872	0.000000	0.000000	0.000000	
620	0	0	1	0.000	-0.000	5.586	0.000980	0.008541	0.000000	
625	0	0	1	0.000	0.000	2.456	0.004375	0.009810	0.000000	

734	0	0	1	-0.000	-2.089	3.144	-0.007122	0.001044	0.000000
736	0	0	1	0.000	-4.992	6.576	-0.005788	0.002496	0.000000
738	0	0	1	0.000	-7.648	9.547	-0.004350	0.003824	0.000000
740	0	0	1	0.000	-10.441	12.103	-0.002687	0.005220	0.000000
742	1	0	1	8.928	-11.929	14.073	0.000000	0.005964	0.000000
744	0	0	1	0.000	-12.413	15.105	0.000147	0.006206	0.000000
746	0	0	1	-0.000	-12.168	13.556	0.001441	0.006084	0.000000
748	0	0	1	-0.000	-8.277	9.958	0.003857	0.004139	0.000000

SUM OF REACTIVE FORCES : (X) = 14.002 (Y) = 1.583 (Z) = 190.956



COMBINATION NO : 25

NODE NO	RESTRAINTS			SUPPORT X[T]	REACTIONS Y[T]	FORCES Z[T]	DISPLACEMENTS		
	IXD	IYD	IZD				X[m]	Y[m]	Z[m]
1	0	0	1	0.000	1.639	0.586	-0.005363	-0.000820	0.000000
3	0	0	1	0.000	3.605	2.289	-0.004397	-0.001802	0.000000
5	0	0	1	0.000	6.496	4.548	-0.002967	-0.003248	0.000000
7	0	0	1	0.000	8.531	7.637	-0.001490	-0.004266	0.000000
9	1	0	1	-1.205	9.715	9.500	0.000000	-0.004858	0.000000
11	0	0	1	0.000	10.074	11.401	0.001826	-0.005037	0.000000
13	0	0	1	0.000	9.536	11.141	0.003531	-0.004768	0.000000
15	0	0	1	-0.000	7.906	9.149	0.005282	-0.003953	0.000000
17	0	0	1	0.000	4.974	6.158	0.006780	-0.002487	0.000000
19	0	0	1	0.000	2.455	3.119	0.007903	-0.001227	0.000000
22	0	0	1	0.000	-0.189	0.774	0.009472	0.000095	0.000000
126	1	1	1	0.000	0.000	2.177	0.000000	0.000000	0.000000
127	1	1	1	0.000	0.000	2.496	0.000000	0.000000	0.000000
251	1	1	1	0.000	0.000	5.691	0.000000	0.000000	0.000000
252	1	1	1	0.000	0.000	5.025	0.000000	0.000000	0.000000
376	1	1	1	0.000	0.000	5.817	0.000000	0.000000	0.000000
377	1	1	1	0.000	0.000	9.610	0.000000	0.000000	0.000000
501	1	1	1	0.000	0.000	1.670	0.000000	0.000000	0.000000
620	0	0	1	0.000	-0.000	5.614	0.003879	0.008761	0.000000
625	0	0	1	0.000	0.000	2.617	0.007569	0.010055	0.000000
734	0	0	1	-0.000	-1.932	2.880	-0.005759	0.000966	0.000000
736	0	0	1	0.000	-4.898	6.376	-0.004441	0.002449	0.000000
738	0	0	1	0.000	-7.472	9.200	-0.003091	0.003736	0.000000
740	0	0	1	0.000	-10.027	11.814	-0.001660	0.005014	0.000000
742	1	0	1	1.465	-11.861	13.974	0.000000	0.005931	0.000000
744	0	0	1	0.000	-12.815	15.299	0.001412	0.006407	0.000000
746	0	0	1	-0.000	-12.431	13.821	0.003148	0.006216	0.000000
748	0	0	1	-0.000	-8.583	10.573	0.005870	0.004291	0.000000

SUM OF REACTIVE FORCES : (X) = 0.261 (Y) = -5.278 (Z) = 190.956

COMBINATION NO : 26

NODE NO	RESTRAINTS			SUPPORT X[T]	REACTIONS Y[T]	FORCES Z[T]	DISPLACEMENTS		
	IXD	IYD	IZD				X[m]	Y[m]	Z[m]
1	0	0	1	0.000	3.935	0.799	-0.005826	-0.001968	0.000000
3	0	0	1	0.000	6.613	2.747	-0.004656	-0.003306	0.000000
5	0	0	1	0.000	9.952	4.876	-0.003100	-0.004976	0.000000
7	0	0	1	0.000	12.235	7.716	-0.001529	-0.006118	0.000000
9	1	0	1	-1.614	13.408	9.585	0.000000	-0.006704	0.000000
11	0	0	1	0.000	13.953	11.398	0.001967	-0.006976	0.000000
13	0	0	1	0.000	13.129	11.172	0.003761	-0.006564	0.000000
15	0	0	1	-0.000	11.020	9.249	0.005561	-0.005510	0.000000
17	0	0	1	0.000	7.690	6.261	0.007079	-0.003845	0.000000
19	0	0	1	0.000	4.691	3.386	0.008217	-0.002345	0.000000
22	0	0	1	0.000	1.420	0.912	0.009964	-0.000710	0.000000
126	1	1	1	0.000	0.000	1.818	0.000000	0.000000	0.000000
127	1	1	1	0.000	0.000	2.332	0.000000	0.000000	0.000000
251	1	1	1	0.000	0.000	5.353	0.000000	0.000000	0.000000
252	1	1	1	0.000	0.000	4.988	0.000000	0.000000	0.000000
376	1	1	1	0.000	0.000	5.282	0.000000	0.000000	0.000000
377	1	1	1	0.000	0.000	9.557	0.000000	0.000000	0.000000
501	1	1	1	0.000	0.000	2.039	0.000000	0.000000	0.000000
620	0	0	1	0.000	-0.000	7.900	0.003566	0.006534	0.000000
625	0	0	1	0.000	0.000	3.359	0.007600	0.007254	0.000000
734	0	0	1	0.000	-1.618	4.033	-0.005445	0.000809	0.000000
736	0	0	1	-0.000	-3.709	8.834	-0.004587	0.001855	0.000000
738	0	0	1	0.000	-6.362	11.704	-0.003256	0.003181	0.000000
740	0	0	1	0.000	-8.808	14.152	-0.001782	0.004404	0.000000
742	1	0	1	1.874	-10.626	16.282	0.000000	0.005313	0.000000
744	0	0	1	0.000	-11.557	17.529	0.001390	0.005779	0.000000
746	0	0	1	-0.000	-10.847	15.745	0.003154	0.005424	0.000000
748	0	0	1	-0.000	-7.708	11.006	0.005361	0.003854	0.000000

SUM OF REACTIVE FORCES : (X) = 0.261 (Y) = 36.810 (Z) = 210.015

COMBINATION NO : 27

NODE NO	RESTRAINTS			SUPPORT X[T]	REACTIONS Y[T]	FORCES Z[T]	DISPLACEMENTS		
	IXD	IYD	IZD				X[m]	Y[m]	Z[m]
1	0	0	1	0.000	0.556	0.298	0.004808	-0.000278	0.000000
3	0	0	1	-0.000	2.402	2.226	0.004002	-0.001201	0.000000
5	0	0	1	-0.000	5.317	4.461	0.002871	-0.002659	0.000000
7	0	0	1	0.000	7.409	7.243	0.001749	-0.003704	0.000000
9	1	0	1	-7.457	9.030	9.592	0.000000	-0.004515	0.000000
11	0	0	1	0.000	9.572	12.036	0.000479	-0.004786	0.000000
13	0	0	1	0.000	8.773	11.276	0.000115	-0.004386	0.000000
15	0	0	1	0.000	7.025	9.297	-0.000335	-0.003512	0.000000
17	0	0	1	0.000	4.406	6.306	-0.001101	-0.002203	0.000000
19	0	0	1	0.000	2.424	3.166	-0.002214	-0.001212	0.000000
22	0	0	1	-0.000	0.188	0.807	-0.003362	-0.000094	0.000000
126	1	1	1	0.000	0.000	2.091	0.000000	0.000000	0.000000
127	1	1	1	0.000	0.000	2.463	0.000000	0.000000	0.000000
251	1	1	1	0.000	0.000	5.658	0.000000	0.000000	0.000000
252	1	1	1	0.000	0.000	5.497	0.000000	0.000000	0.000000
376	1	1	1	0.000	0.000	6.159	0.000000	0.000000	0.000000
377	1	1	1	0.000	0.000	8.770	0.000000	0.000000	0.000000
501	1	1	1	0.000	0.000	4.798	0.000000	0.000000	0.000000
620	0	0	1	-0.000	-0.000	12.910	-0.002439	-0.004021	0.000000
625	0	0	1	-0.000	-0.000	1.897	-0.004861	-0.004828	0.000000
734	0	0	1	0.000	-0.472	1.179	0.005774	0.000236	0.000000
736	0	0	1	-0.000	-2.624	4.793	0.004333	0.001312	0.000000
738	0	0	1	-0.000	-5.734	8.170	0.003046	0.002867	0.000000
740	0	0	1	-0.000	-8.405	11.400	0.001811	0.004203	0.000000
742	1	0	1	-6.805	-10.791	14.097	0.000000	0.005395	0.000000
744	0	0	1	-0.000	-11.931	15.396	0.000531	0.005966	0.000000
746	0	0	1	-0.000	-9.801	12.274	0.000445	0.004901	0.000000
748	0	0	1	0.000	-5.142	6.690	0.000349	0.002571	0.000000

SUM OF REACTIVE FORCES : (X) = -14.263 (Y) = 2.202 (Z) = 190.952  
 COMBINATION NO : 28

NODE NO	RESTRAINTS			SUPPORT X[T]	REACTIONS FORCES			DISPLACEMENTS		
	IXD	IYD	IZD		Y[T]	Z[T]	X[m]	Y[m]	Z[m]	
1	0	0	1	0.000	1.306	0.533	0.001977	-0.000653	0.000000	
3	0	0	1	-0.000	2.885	2.134	0.001322	-0.001443	0.000000	
5	0	0	1	0.000	5.692	4.338	0.000551	-0.002846	0.000000	
7	0	0	1	0.000	7.960	7.998	-0.000117	-0.003980	0.000000	
9	1	0	1	5.579	8.998	9.555	0.000000	-0.004499	0.000000	
11	0	0	1	0.000	8.970	11.117	-0.001559	-0.004485	0.000000	
13	0	0	1	0.000	8.368	11.391	-0.002504	-0.004184	0.000000	
15	0	0	1	0.000	6.681	9.334	-0.003407	-0.003340	0.000000	
17	0	0	1	0.000	4.044	6.349	-0.004495	-0.002022	0.000000	
19	0	0	1	0.000	2.037	3.263	-0.005894	-0.001018	0.000000	
22	0	0	1	-0.000	-0.395	0.642	-0.007270	0.000197	0.000000	
126	1	1	1	0.000	0.000	2.124	0.000000	0.000000	0.000000	
127	1	1	1	0.000	0.000	2.403	0.000000	0.000000	0.000000	
251	1	1	1	0.000	0.000	5.761	0.000000	0.000000	0.000000	
252	1	1	1	0.000	0.000	5.396	0.000000	0.000000	0.000000	
376	1	1	1	0.000	0.000	6.373	0.000000	0.000000	0.000000	
377	1	1	1	0.000	0.000	8.564	0.000000	0.000000	0.000000	
501	1	1	1	0.000	0.000	5.274	0.000000	0.000000	0.000000	
620	0	0	1	-0.000	-0.000	12.423	-0.007386	-0.003782	0.000000	
625	0	0	1	-0.000	-0.000	1.771	-0.010095	-0.004495	0.000000	
734	0	0	1	-0.000	-0.798	1.899	0.001999	0.000399	0.000000	
736	0	0	1	0.000	-2.905	5.153	0.000886	0.001452	0.000000	
738	0	0	1	0.000	-6.079	8.782	0.000008	0.003039	0.000000	
740	0	0	1	0.000	-9.221	11.907	-0.000520	0.004611	0.000000	
742	1	0	1	8.423	-10.911	14.226	0.000000	0.005456	0.000000	
744	0	0	1	-0.000	-11.117	14.931	-0.001816	0.005559	0.000000	
746	0	0	1	-0.000	-9.361	11.661	-0.002575	0.004680	0.000000	
748	0	0	1	0.000	-4.571	5.649	-0.003023	0.002285	0.000000	

SUM OF REACTIVE FORCES : (X) = 14.002 (Y) = 1.583 (Z) = 190.952

COMBINATION NO : 29

NODE NO	RESTRAINTS			SUPPORT X[T]	REACTIONS FORCES			DISPLACEMENTS		
	IXD	IYD	IZD		Y[T]	Z[T]	X[m]	Y[m]	Z[m]	
1	0	0	1	0.000	0.438	0.480	0.003020	-0.000219	0.000000	
3	0	0	1	-0.000	2.047	2.042	0.002298	-0.001023	0.000000	
5	0	0	1	-0.000	4.879	4.342	0.001459	-0.002440	0.000000	
7	0	0	1	0.000	7.042	7.595	0.000678	-0.003521	0.000000	
9	1	0	1	-0.699	8.354	9.529	0.000000	-0.004177	0.000000	
11	0	0	1	0.000	8.568	11.529	-0.000476	-0.004284	0.000000	
13	0	0	1	0.000	7.873	11.290	-0.001038	-0.003937	0.000000	
15	0	0	1	0.000	6.178	9.272	-0.001616	-0.003089	0.000000	
17	0	0	1	0.000	3.551	6.286	-0.002441	-0.001775	0.000000	
19	0	0	1	0.000	1.535	3.089	-0.003582	-0.000768	0.000000	
22	0	0	1	-0.000	-0.720	0.749	-0.004821	0.000360	0.000000	
126	1	1	1	0.000	0.000	2.245	0.000000	0.000000	0.000000	
127	1	1	1	0.000	0.000	2.550	0.000000	0.000000	0.000000	
251	1	1	1	0.000	0.000	5.787	0.000000	0.000000	0.000000	
252	1	1	1	0.000	0.000	5.503	0.000000	0.000000	0.000000	
376	1	1	1	0.000	0.000	6.331	0.000000	0.000000	0.000000	
377	1	1	1	0.000	0.000	8.797	0.000000	0.000000	0.000000	
501	1	1	1	0.000	0.000	5.072	0.000000	0.000000	0.000000	
620	0	0	1	-0.000	-0.000	12.451	-0.004487	-0.003562	0.000000	
625	0	0	1	-0.000	-0.000	1.931	-0.006901	-0.004250	0.000000	
734	0	0	1	-0.000	-0.641	1.636	0.003361	0.000320	0.000000	
736	0	0	1	0.000	-2.811	4.952	0.002233	0.001405	0.000000	
738	0	0	1	-0.000	-5.902	8.436	0.001268	0.002951	0.000000	
740	0	0	1	0.000	-8.807	11.618	0.000506	0.004404	0.000000	
742	1	0	1	0.960	-10.844	14.126	0.000000	0.005422	0.000000	
744	0	0	1	-0.000	-11.519	15.126	-0.000551	0.005760	0.000000	
746	0	0	1	-0.000	-9.625	11.926	-0.000869	0.004812	0.000000	
748	0	0	1	0.000	-4.876	6.264	-0.001011	0.002438	0.000000	

SUM OF REACTIVE FORCES : (X) = 0.260 (Y) = -5.279 (Z) = 190.952

COMBINATION NO : 30

NODE NO	RESTRAINTS			SUPPORT X[T]	REACTIONS FORCES			DISPLACEMENTS		
	IXD	IYD	IZD		Y[T]	Z[T]	X[m]	Y[m]	Z[m]	
1	0	0	1	0.000	2.734	0.692	0.002558	-0.001367	0.000000	
3	0	0	1	-0.000	5.055	2.500	0.002038	-0.002528	0.000000	
5	0	0	1	-0.000	8.335	4.670	0.001326	-0.004168	0.000000	
7	0	0	1	0.000	10.746	7.674	0.000639	-0.005373	0.000000	
9	1	0	1	-1.108	12.047	9.614	0.000000	-0.006023	0.000000	
11	0	0	1	0.000	12.447	11.525	-0.000335	-0.006223	0.000000	
13	0	0	1	0.000	11.466	11.321	-0.000808	-0.005733	0.000000	
15	0	0	1	0.000	9.293	9.372	-0.001337	-0.004646	0.000000	
17	0	0	1	0.000	6.268	6.388	-0.002142	-0.003134	0.000000	
19	0	0	1	0.000	3.771	3.356	-0.003268	-0.001886	0.000000	
22	0	0	1	-0.000	0.889	0.887	-0.004329	-0.000445	0.000000	
126	1	1	1	0.000	0.000	1.886	0.000000	0.000000	0.000000	
127	1	1	1	0.000	0.000	2.386	0.000000	0.000000	0.000000	
251	1	1	1	0.000	0.000	5.448	0.000000	0.000000	0.000000	
252	1	1	1	0.000	0.000	5.466	0.000000	0.000000	0.000000	
376	1	1	1	0.000	0.000	5.796	0.000000	0.000000	0.000000	
377	1	1	1	0.000	0.000	8.743	0.000000	0.000000	0.000000	
501	1	1	1	0.000	0.000	5.441	0.000000	0.000000	0.000000	
620	0	0	1	-0.000	-0.000	14.737	-0.004800	-0.005788	0.000000	
625	0	0	1	-0.000	-0.000	2.673	-0.006869	-0.007051	0.000000	
734	0	0	1	0.000	-0.327	2.788	0.003676	0.000164	0.000000	
736	0	0	1	-0.000	-1.622	7.410	0.002087	0.000811	0.000000	
738	0	0	1	-0.000	-4.792	10.940	0.001102	0.002396	0.000000	
740	0	0	1	0.000	-7.588	13.956	0.000384	0.003794	0.000000	
742	1	0	1	1.369	-9.609	16.434	0.000000	0.004804	0.000000	
744	0	0	1	-0.000	-10.262	17.356	-0.000573	0.005131	0.000000	

746	0	0	1	-0.000	-8.041	13.850	-0.000863	0.004020	0.000000
748	0	0	1	0.000	-4.001	6.697	-0.001519	0.002001	0.000000

SUM OF REACTIVE FORCES : (X) = 0.260 (Y) = 36.810 (Z) = 210.011  
 COMBINATION NO : 31

NODE NO	RESTRAINTS			SUPPORT X[T]	REACTIONS Y[T]	FORCES Z[T]	DISPLACEMENTS		
	IXD	IYD	IZD				X[m]	Y[m]	Z[m]
1	0	0	1	-0.000	2.353	0.656	-0.004020	-0.001176	0.000000
3	0	0	1	0.000	5.455	3.638	-0.003088	-0.002727	0.000000
5	0	0	1	-0.000	9.825	6.953	-0.001838	-0.004913	0.000000
7	0	0	1	0.000	12.765	11.084	-0.000568	-0.006383	0.000000
9	1	0	1	-8.554	14.822	14.228	0.000000	-0.007411	0.000000
11	0	0	1	0.000	15.608	17.478	0.003096	-0.007804	0.000000
13	0	0	1	0.000	14.651	16.571	0.005250	-0.007326	0.000000
15	0	0	1	-0.000	12.170	13.694	0.007385	-0.006085	0.000000
17	0	0	1	0.000	7.913	9.303	0.009073	-0.003957	0.000000
19	0	0	1	-0.000	4.370	4.830	0.010182	-0.002185	0.000000
22	0	0	1	0.000	0.552	1.217	0.011905	-0.000276	0.000000
126	1	1	1	0.000	0.000	3.183	0.000000	0.000000	0.000000
127	1	1	1	0.000	0.000	3.740	0.000000	0.000000	0.000000
251	1	1	1	0.000	0.000	8.521	0.000000	0.000000	0.000000
252	1	1	1	0.000	0.000	7.729	0.000000	0.000000	0.000000
376	1	1	1	0.000	0.000	8.686	0.000000	0.000000	0.000000
377	1	1	1	0.000	0.000	14.283	0.000000	0.000000	0.000000
501	1	1	1	0.000	0.000	2.977	0.000000	0.000000	0.000000
620	0	0	1	0.000	-0.000	10.879	0.005589	0.009641	0.000000
625	0	0	1	0.000	0.000	3.937	-0.009688	0.010973	0.000000
734	0	0	1	0.000	-2.285	3.456	-0.003729	0.001142	0.000000
736	0	0	1	-0.000	-6.342	8.919	-0.002760	0.003171	0.000000
738	0	0	1	0.000	-10.294	13.117	-0.001680	0.005147	0.000000
740	0	0	1	0.000	-13.907	17.130	-0.000598	0.006954	0.000000
742	1	0	1	-5.709	-17.003	20.575	0.000000	0.008501	0.000000
744	0	0	1	0.000	-18.807	22.751	0.002659	0.009403	0.000000
746	0	0	1	-0.000	-17.662	20.278	0.004925	0.008831	0.000000
748	0	0	1	-0.000	-11.984	14.970	0.008245	0.005992	0.000000

SUM OF REACTIVE FORCES : (X) = -14.262 (Y) = 2.202 (Z) = 284.785

COMBINATION NO : 32

NODE NO	RESTRAINTS			SUPPORT X[T]	REACTIONS Y[T]	FORCES Z[T]	DISPLACEMENTS		
	IXD	IYD	IZD				X[m]	Y[m]	Z[m]
1	0	0	1	0.000	3.146	0.893	-0.006855	-0.001573	0.000000
3	0	0	1	0.000	5.987	3.549	-0.005771	-0.002993	0.000000
5	0	0	1	0.000	10.251	6.832	-0.004160	-0.005125	0.000000
7	0	0	1	0.000	13.369	11.839	-0.002434	-0.006684	0.000000
9	1	0	1	4.487	14.842	14.193	0.000000	-0.007421	0.000000
11	0	0	1	0.000	15.062	16.559	0.001058	-0.007531	0.000000
13	0	0	1	0.000	14.302	16.687	0.002630	-0.007151	0.000000
15	0	0	1	-0.000	11.881	13.732	0.004312	-0.005941	0.000000
17	0	0	1	0.000	7.608	9.347	0.005677	-0.003804	0.000000
19	0	0	1	0.000	4.041	4.931	0.006500	-0.002021	0.000000
22	0	0	1	0.000	0.022	1.054	0.007999	-0.000011	0.000000
126	1	1	1	0.000	0.000	3.211	0.000000	0.000000	0.000000
127	1	1	1	0.000	0.000	3.677	0.000000	0.000000	0.000000
251	1	1	1	0.000	0.000	8.622	0.000000	0.000000	0.000000
252	1	1	1	0.000	0.000	7.628	0.000000	0.000000	0.000000
376	1	1	1	0.000	0.000	8.900	0.000000	0.000000	0.000000
377	1	1	1	0.000	0.000	14.075	0.000000	0.000000	0.000000
501	1	1	1	0.000	0.000	3.460	0.000000	0.000000	0.000000
620	0	0	1	0.000	-0.000	10.406	0.000643	0.009848	0.000000
625	0	0	1	0.000	0.000	3.809	0.004454	0.011267	0.000000
734	0	0	1	-0.000	-2.609	4.173	-0.007503	0.001304	0.000000
736	0	0	1	0.000	-6.619	9.275	-0.006207	0.003309	0.000000
738	0	0	1	0.000	-10.635	13.727	-0.004717	0.005317	0.000000
740	0	0	1	0.000	-14.719	17.636	-0.002929	0.007360	0.000000
742	1	0	1	9.515	-17.119	20.703	0.000000	0.008560	0.000000
744	0	0	1	0.000	-17.989	22.285	0.000313	0.008995	0.000000
746	0	0	1	-0.000	-17.215	19.660	0.001906	0.008607	0.000000
748	0	0	1	-0.000	-11.405	13.920	0.004872	0.005703	0.000000

SUM OF REACTIVE FORCES : (X) = 14.002 (Y) = 2.202 (Z) = 284.785

COMBINATION NO : 33

NODE NO	RESTRAINTS			SUPPORT X[T]	REACTIONS Y[T]	FORCES Z[T]	DISPLACEMENTS		
	IXD	IYD	IZD				X[m]	Y[m]	Z[m]
1	0	0	1	0.000	2.235	0.838	-0.005808	-0.001117	0.000000
3	0	0	1	0.000	5.100	3.454	-0.004793	-0.002550	0.000000
5	0	0	1	0.000	9.387	6.834	-0.003251	-0.004694	0.000000
7	0	0	1	0.000	12.399	11.436	-0.001639	-0.006199	0.000000
9	1	0	1	-1.796	14.146	14.165	0.000000	-0.007073	0.000000
11	0	0	1	0.000	14.604	16.971	0.002142	-0.007302	0.000000
13	0	0	1	0.000	13.752	16.585	0.004097	-0.006876	0.000000
15	0	0	1	-0.000	11.324	13.670	0.006103	-0.005662	0.000000
17	0	0	1	0.000	7.058	9.282	0.007733	-0.003529	0.000000
19	0	0	1	0.000	3.482	4.753	0.008814	-0.001741	0.000000
22	0	0	1	0.000	-0.356	1.159	0.010445	0.000178	0.000000
126	1	1	1	0.000	0.000	3.337	0.000000	0.000000	0.000000
127	1	1	1	0.000	0.000	3.828	0.000000	0.000000	0.000000
251	1	1	1	0.000	0.000	8.650	0.000000	0.000000	0.000000
252	1	1	1	0.000	0.000	7.735	0.000000	0.000000	0.000000
376	1	1	1	0.000	0.000	8.858	0.000000	0.000000	0.000000
377	1	1	1	0.000	0.000	14.310	0.000000	0.000000	0.000000
501	1	1	1	0.000	0.000	3.251	0.000000	0.000000	0.000000
620	0	0	1	0.000	-0.000	10.421	0.003541	0.010101	0.000000
625	0	0	1	0.000	0.000	3.970	0.007648	0.011551	0.000000
734	0	0	1	-0.000	-2.454	3.912	-0.006142	0.001227	0.000000
736	0	0	1	0.000	-6.529	9.078	-0.004860	0.003264	0.000000
738	0	0	1	0.000	-10.462	13.383	-0.003459	0.005231	0.000000
740	0	0	1	0.000	-14.309	17.348	-0.001903	0.007154	0.000000

742	1	0	1	2.056	-17.055	20.604	0.000000	0.008528	0.000000
744	0	0	1	0.000	-18.395	22.481	0.001577	0.009198	0.000000
746	0	0	1	-0.000	-17.485	19.929	0.003611	0.008743	0.000000
748	0	0	1	-0.000	-11.718	14.544	0.006885	0.005859	0.000000

SUM OF REACTIVE FORCES : (X) = 0.261 (Y) = -5.279 (Z) = 284.785  
COMBINATION NO : 34

NODE NO	RESTRAINTS			SUPPORT X[T]	REACTIONS FORCES			DISPLACEMENTS		
	IXD	IYD	IZD		Y[T]	Z[T]	X[m]	Y[m]	Z[m]	
1	0	0	1	0.000	4.531	1.050	-0.006270	-0.002265	0.000000	
3	0	0	1	0.000	8.108	3.912	-0.005052	-0.004054	0.000000	
5	0	0	1	0.000	12.843	7.162	-0.003384	-0.006422	0.000000	
7	0	0	1	0.000	16.103	11.515	-0.001677	-0.008051	0.000000	
9	1	0	1	-2.205	17.839	14.251	0.000000	-0.008919	0.000000	
11	0	0	1	0.000	18.483	16.968	0.002283	-0.009241	0.000000	
13	0	0	1	0.000	17.345	16.616	0.004326	-0.008672	0.000000	
15	0	0	1	-0.000	14.438	13.769	0.006383	-0.007219	0.000000	
17	0	0	1	0.000	9.775	9.385	0.008032	-0.004887	0.000000	
19	0	0	1	0.000	5.718	5.020	0.009128	-0.002859	0.000000	
22	0	0	1	0.000	1.253	1.297	0.010937	-0.000627	0.000000	
126	1	1	1	0.000	0.000	2.978	0.000000	0.000000	0.000000	
127	1	1	1	0.000	0.000	3.663	0.000000	0.000000	0.000000	
251	1	1	1	0.000	0.000	8.312	0.000000	0.000000	0.000000	
252	1	1	1	0.000	0.000	7.698	0.000000	0.000000	0.000000	
376	1	1	1	0.000	0.000	8.323	0.000000	0.000000	0.000000	
377	1	1	1	0.000	0.000	14.256	0.000000	0.000000	0.000000	
501	1	1	1	0.000	0.000	3.620	0.000000	0.000000	0.000000	
620	0	0	1	0.000	-0.000	12.707	0.003227	0.007874	0.000000	
625	0	0	1	0.000	0.000	4.713	0.007680	0.008750	0.000000	
734	0	0	1	0.000	-2.141	5.065	-0.005827	0.001070	0.000000	
736	0	0	1	-0.000	-5.340	11.536	-0.005006	0.002670	0.000000	
738	0	0	1	0.000	-9.352	15.886	-0.003624	0.004676	0.000000	
740	0	0	1	0.000	-13.090	19.686	-0.002025	0.006545	0.000000	
742	1	0	1	2.465	-15.821	22.912	0.000000	0.007910	0.000000	
744	0	0	1	0.000	-17.137	24.712	0.001555	0.008569	0.000000	
746	0	0	1	-0.000	-15.901	21.854	0.003617	0.007951	0.000000	
748	0	0	1	-0.000	-10.844	14.977	0.006377	0.005422	0.000000	

SUM OF REACTIVE FORCES : (X) = 0.261 (Y) = 36.809 (Z) = 303.844

COMBINATION NO : 35

NODE NO	RESTRAINTS			SUPPORT X[T]	REACTIONS FORCES			DISPLACEMENTS		
	IXD	IYD	IZD		Y[T]	Z[T]	X[m]	Y[m]	Z[m]	
1	0	0	1	0.000	1.152	0.550	0.004363	-0.000576	0.000000	
3	0	0	1	-0.000	3.897	3.391	0.003606	-0.001949	0.000000	
5	0	0	1	-0.000	8.209	6.747	0.002587	-0.004104	0.000000	
7	0	0	1	0.000	11.277	11.042	0.001600	-0.005638	0.000000	
9	1	0	1	-8.048	13.461	14.257	0.000000	-0.006730	0.000000	
11	0	0	1	0.000	14.102	17.606	0.000795	-0.007051	0.000000	
13	0	0	1	0.000	12.989	16.721	0.000681	-0.006494	0.000000	
15	0	0	1	0.000	10.443	13.818	0.000487	-0.005221	0.000000	
17	0	0	1	0.000	6.490	9.430	-0.000148	-0.003245	0.000000	
19	0	0	1	0.000	3.451	4.799	-0.001303	-0.001726	0.000000	
22	0	0	1	-0.000	0.021	1.192	-0.002388	-0.000011	0.000000	
126	1	1	1	0.000	0.000	3.251	0.000000	0.000000	0.000000	
127	1	1	1	0.000	0.000	3.795	0.000000	0.000000	0.000000	
251	1	1	1	0.000	0.000	8.617	0.000000	0.000000	0.000000	
252	1	1	1	0.000	0.000	8.207	0.000000	0.000000	0.000000	
376	1	1	1	0.000	0.000	9.200	0.000000	0.000000	0.000000	
377	1	1	1	0.000	0.000	13.469	0.000000	0.000000	0.000000	
501	1	1	1	0.000	0.000	6.378	0.000000	0.000000	0.000000	
620	0	0	1	-0.000	-0.000	17.716	-0.002777	-0.002681	0.000000	
625	0	0	1	-0.000	-0.000	3.251	-0.004781	-0.003332	0.000000	
734	0	0	1	0.000	-0.994	2.211	0.005391	0.000497	0.000000	
736	0	0	1	-0.000	-4.255	7.495	0.003914	0.002127	0.000000	
738	0	0	1	-0.000	-8.724	12.352	0.002678	0.004362	0.000000	
740	0	0	1	-0.000	-12.687	16.934	0.001568	0.006344	0.000000	
742	1	0	1	-6.215	-15.985	20.727	0.000000	0.007993	0.000000	
744	0	0	1	-0.000	-17.511	22.578	0.000696	0.008756	0.000000	
746	0	0	1	-0.000	-14.855	18.383	0.000909	0.007428	0.000000	
748	0	0	1	0.000	-8.277	10.661	0.001364	0.004139	0.000000	

SUM OF REACTIVE FORCES : (X) = -14.263 (Y) = 2.201 (Z) = 284.780

COMBINATION NO : 36

NODE NO	RESTRAINTS			SUPPORT X[T]	REACTIONS FORCES			DISPLACEMENTS		
	IXD	IYD	IZD		Y[T]	Z[T]	X[m]	Y[m]	Z[m]	
1	0	0	1	0.000	1.945	0.787	0.001528	-0.000972	0.000000	
3	0	0	1	-0.000	4.429	3.302	0.000924	-0.002214	0.000000	
5	0	0	1	0.000	8.634	6.626	0.000265	-0.004317	0.000000	
7	0	0	1	0.000	11.880	11.798	-0.000266	-0.005940	0.000000	
9	1	0	1	4.993	13.481	14.222	0.000000	-0.006740	0.000000	
11	0	0	1	0.000	13.556	16.687	-0.001244	-0.006778	0.000000	
13	0	0	1	0.000	12.640	16.836	-0.001940	-0.006320	0.000000	
15	0	0	1	0.000	10.153	13.856	-0.002587	-0.005077	0.000000	
17	0	0	1	0.000	6.185	9.475	-0.003544	-0.003093	0.000000	
19	0	0	1	0.000	3.122	4.901	-0.004985	-0.001561	0.000000	
22	0	0	1	-0.000	-0.508	1.029	-0.006294	0.000254	0.000000	
126	1	1	1	0.000	0.000	3.280	0.000000	0.000000	0.000000	
127	1	1	1	0.000	0.000	3.731	0.000000	0.000000	0.000000	
251	1	1	1	0.000	0.000	8.718	0.000000	0.000000	0.000000	
252	1	1	1	0.000	0.000	8.105	0.000000	0.000000	0.000000	
376	1	1	1	0.000	0.000	9.414	0.000000	0.000000	0.000000	
377	1	1	1	0.000	0.000	13.261	0.000000	0.000000	0.000000	
501	1	1	1	0.000	0.000	6.862	0.000000	0.000000	0.000000	
620	0	0	1	-0.000	-0.000	17.243	-0.007723	-0.002475	0.000000	
625	0	0	1	-0.000	-0.000	3.123	-0.010015	-0.003038	0.000000	
734	0	0	1	-0.000	-1.318	2.929	0.001617	0.000659	0.000000	
736	0	0	1	0.000	-4.531	7.851	0.000467	0.002266	0.000000	

738	0	0	1	0.000	-9.065	12.962	-0.000359	0.004533	0.000000
740	0	0	1	0.000	-13.499	17.439	-0.000763	0.006750	0.000000
742	1	0	1	9.009	-16.102	20.855	0.000000	0.008051	0.000000
744	0	0	1	-0.000	-16.694	22.112	-0.001649	0.008347	0.000000
746	0	0	1	-0.000	-14.408	17.765	-0.002110	0.007204	0.000000
748	0	0	1	0.000	-7.698	9.611	-0.002008	0.003849	0.000000

SUM OF REACTIVE FORCES : (X) = 14.001 (Y) = 2.201 (Z) = 284.780

COMBINATION NO : 37

NODE NO	RESTRAINTS			SUPPORT X[T]	REACTIONS Y[T]	FORCES Z[T]	DISPLACEMENTS		
	IXD	IYD	IZD				X[m]	Y[m]	Z[m]
1	0	0	1	0.000	1.033	0.732	0.002575	-0.000517	0.000000
3	0	0	1	-0.000	3.542	3.207	0.001902	-0.001771	0.000000
5	0	0	1	-0.000	7.770	6.628	0.001174	-0.003885	0.000000
7	0	0	1	0.000	10.910	11.394	0.000530	-0.005455	0.000000
9	1	0	1	-1.290	12.785	14.194	0.000000	-0.006392	0.000000
11	0	0	1	0.000	13.098	17.099	-0.000160	-0.006549	0.000000
13	0	0	1	0.000	12.089	16.734	-0.000473	-0.006045	0.000000
15	0	0	1	0.000	9.596	13.793	-0.000795	-0.004798	0.000000
17	0	0	1	0.000	5.635	9.410	-0.001488	-0.002818	0.000000
19	0	0	1	0.000	2.562	4.723	-0.002671	-0.001281	0.000000
22	0	0	1	-0.000	-0.887	1.134	-0.003848	0.000443	0.000000
126	1	1	1	0.000	0.000	3.405	0.000000	0.000000	0.000000
127	1	1	1	0.000	0.000	3.882	0.000000	0.000000	0.000000
251	1	1	1	0.000	0.000	8.746	0.000000	0.000000	0.000000
252	1	1	1	0.000	0.000	8.213	0.000000	0.000000	0.000000
376	1	1	1	0.000	0.000	9.372	0.000000	0.000000	0.000000
377	1	1	1	0.000	0.000	13.496	0.000000	0.000000	0.000000
501	1	1	1	0.000	0.000	6.653	0.000000	0.000000	0.000000
620	0	0	1	-0.000	-0.000	17.258	-0.004826	-0.002222	0.000000
625	0	0	1	-0.000	-0.000	3.284	-0.006821	-0.002754	0.000000
734	0	0	1	-0.000	-1.163	2.668	0.002979	0.000582	0.000000
736	0	0	1	0.000	-4.441	7.654	0.001814	0.002221	0.000000
738	0	0	1	-0.000	-8.892	12.618	0.000900	0.004446	0.000000
740	0	0	1	0.000	-13.089	17.152	0.000263	0.006545	0.000000
742	1	0	1	1.551	-16.038	20.756	0.000000	0.008019	0.000000
744	0	0	1	-0.000	-17.100	22.308	-0.000385	0.008550	0.000000
746	0	0	1	-0.000	-14.679	18.035	-0.000405	0.007339	0.000000
748	0	0	1	0.000	-8.012	10.235	0.000005	0.004006	0.000000

SUM OF REACTIVE FORCES : (X) = 0.260 (Y) = -5.279 (Z) = 284.780

COMBINATION NO : 38

NODE NO	RESTRAINTS			SUPPORT X[T]	REACTIONS Y[T]	FORCES Z[T]	DISPLACEMENTS		
	IXD	IYD	IZD				X[m]	Y[m]	Z[m]
1	0	0	1	0.000	3.330	0.944	0.002113	-0.001665	0.000000
3	0	0	1	-0.000	6.550	3.665	0.001643	-0.003275	0.000000
5	0	0	1	-0.000	11.226	6.956	0.001041	-0.005613	0.000000
7	0	0	1	0.000	14.614	11.473	0.000491	-0.007307	0.000000
9	1	0	1	-1.699	16.477	14.279	0.000000	-0.008239	0.000000
11	0	0	1	0.000	16.977	17.096	-0.000019	-0.008488	0.000000
13	0	0	1	0.000	15.682	16.765	-0.000243	-0.007841	0.000000
15	0	0	1	0.000	12.710	13.893	-0.000516	-0.006355	0.000000
17	0	0	1	0.000	8.352	9.512	-0.001189	-0.004176	0.000000
19	0	0	1	0.000	4.798	4.990	-0.002357	-0.002399	0.000000
22	0	0	1	-0.000	0.723	1.272	-0.003356	-0.000361	0.000000
126	1	1	1	0.000	0.000	3.047	0.000000	0.000000	0.000000
127	1	1	1	0.000	0.000	3.718	0.000000	0.000000	0.000000
251	1	1	1	0.000	0.000	8.407	0.000000	0.000000	0.000000
252	1	1	1	0.000	0.000	8.175	0.000000	0.000000	0.000000
376	1	1	1	0.000	0.000	8.837	0.000000	0.000000	0.000000
377	1	1	1	0.000	0.000	13.442	0.000000	0.000000	0.000000
501	1	1	1	0.000	0.000	7.022	0.000000	0.000000	0.000000
620	0	0	1	-0.000	-0.000	19.544	-0.005139	-0.004448	0.000000
625	0	0	1	-0.000	-0.000	4.027	-0.006790	-0.005555	0.000000
734	0	0	1	0.000	-0.850	3.820	0.003293	0.000425	0.000000
736	0	0	1	-0.000	-3.252	10.112	0.001668	0.001626	0.000000
738	0	0	1	-0.000	-7.782	15.122	0.000735	0.003891	0.000000
740	0	0	1	0.000	-11.870	19.490	0.000141	0.005935	0.000000
742	1	0	1	1.960	-14.803	23.065	0.000000	0.007402	0.000000
744	0	0	1	-0.000	-15.842	24.538	-0.000408	0.007921	0.000000
746	0	0	1	-0.000	-13.095	19.959	-0.000399	0.006547	0.000000
748	0	0	1	0.000	-7.137	10.668	-0.000503	0.003568	0.000000

SUM OF REACTIVE FORCES : (X) = 0.260 (Y) = 36.809 (Z) = 303.839

NODE NO	COMBINATION NO	MAKSIMUM X[T]	SUPPORT Y[T]	REACTIONS Z[T]	COMBINATIONS NO	MINIMUM X[T]	SUPPORT Y[T]	REACTIONS Z[T]
1	X 36	0.000	1.945	0.787	23	-0.000	1.757	0.405
	Y 14	0.000	5.699	1.885	29	0.000	0.438	0.480
	Z 5	0.000	4.332	1.992	1	-0.000	0.453	0.157
3	X 19	0.000	11.778	9.156	27	-0.000	2.402	2.226
	Y 14	0.000	12.302	8.125	1	0.000	1.280	0.870
	Z 5	0.000	11.455	9.448	1	0.000	1.280	0.870
5	X 24	0.000	7.309	4.544	11	-0.000	18.914	15.303
	Y 5	-0.000	22.451	18.455	1	0.000	2.789	2.066
	Z 5	-0.000	22.451	18.455	1	0.000	2.789	2.066
7	X 16	0.000	14.749	15.287	1	-0.000	4.085	4.066
	Y 5	0.000	29.864	30.133	1	-0.000	4.085	4.066
	Z 5	0.000	29.864	30.133	1	-0.000	4.085	4.066
9	X 8	6.241	9.259	8.954	11	-10.217	28.917	30.380
	Y 5	-4.472	33.973	36.430	1	-0.579	4.991	5.454
	Z 5	-4.472	33.973	36.430	1	-0.579	4.991	5.454
11	X 19	0.000	33.912	41.284	1	-0.000	5.281	6.849
	Y 5	0.000	34.509	43.090	1	-0.000	5.281	6.849
	Z 5	0.000	34.509	43.090	1	-0.000	5.281	6.849
13	X 11	0.000	27.672	35.118	1	0.000	4.989	6.693
	Y 5	0.000	32.100	42.117	1	0.000	4.989	6.693
	Z 5	0.000	32.100	42.117	1	0.000	4.989	6.693
15	X 28	0.000	6.681	9.334	19	-0.000	25.999	33.821
	Y 5	-0.000	26.167	35.329	1	-0.000	3.992	5.248
	Z 5	-0.000	26.167	35.329	1	-0.000	3.992	5.248
17	X 20	0.000	14.759	23.904	24	0.000	5.466	6.222
	Y 19	0.000	16.182	23.777	1	0.000	2.315	3.217
	Z 5	0.000	16.114	24.885	1	0.000	2.315	3.217
19	X 12	0.000	7.162	11.143	23	-0.000	3.343	3.196
	Y 14	0.000	8.896	11.236	1	0.000	1.004	1.305
	Z 5	0.000	8.111	13.404	1	0.000	1.004	1.305
22	X 19	0.000	-1.053	3.058	27	-0.000	0.188	0.807
	Y 26	0.000	1.420	0.912	20	-0.000	-1.584	3.033
	Z 5	0.000	-1.377	3.191	1	-0.000	-0.174	0.243
126	X 1	0.000	0.000	0.817	1	0.000	0.000	0.817
	Y 1	0.000	0.000	0.817	1	0.000	0.000	0.817
	Z 5	0.000	0.000	9.607	1	0.000	0.000	0.817
127	X 1	0.000	0.000	0.908	1	0.000	0.000	0.908
	Y 1	0.000	0.000	0.908	1	0.000	0.000	0.908
	Z 5	0.000	0.000	10.974	1	0.000	0.000	0.908
251	X 1	0.000	0.000	2.588	1	0.000	0.000	2.588
	Y 1	0.000	0.000	2.588	1	0.000	0.000	2.588
	Z 5	0.000	0.000	24.085	1	0.000	0.000	2.588
252	X 1	0.000	0.000	2.348	1	0.000	0.000	2.348
	Y 1	0.000	0.000	2.348	1	0.000	0.000	2.348
	Z 5	0.000	0.000	21.958	1	0.000	0.000	2.348
376	X 1	0.000	0.000	2.893	1	0.000	0.000	2.893
	Y 1	0.000	0.000	2.893	1	0.000	0.000	2.893
	Z 5	0.000	0.000	24.515	1	0.000	0.000	2.893
377	X 1	0.000	0.000	4.453	1	0.000	0.000	4.453
	Y 1	0.000	0.000	4.453	1	0.000	0.000	4.453
	Z 5	0.000	0.000	37.622	1	0.000	0.000	4.453
501	X 1	0.000	0.000	1.359	1	0.000	0.000	1.359
	Y 1	0.000	0.000	1.359	1	0.000	0.000	1.359
	Z 20	0.000	0.000	13.420	1	0.000	0.000	1.359
620	X 17	0.000	-0.000	20.108	28	-0.000	-0.000	12.423
	Y 1	-0.000	0.000	4.709	19	0.000	-0.000	32.966
	Z 20	-0.000	-0.000	39.803	1	-0.000	0.000	4.709
625	X 17	0.000	0.000	7.034	16	-0.000	-0.000	5.069
	Y 23	0.000	0.000	2.583	16	-0.000	-0.000	5.069
	Z 5	0.000	0.000	11.008	1	0.000	0.000	1.096
734	X 7	0.000	-1.057	1.632	13	-0.000	-3.286	5.951
	Y 1	-0.000	-0.294	0.564	19	-0.000	-4.228	7.442
	Z 19	-0.000	-4.228	7.442	1	-0.000	-0.294	0.564
736	X 36	0.000	-4.531	7.851	11	-0.000	-10.691	16.107
	Y 1	0.000	-1.412	2.018	19	-0.000	-13.009	19.501
	Z 5	-0.000	-12.458	19.516	1	0.000	-1.412	2.018
738	X 15	0.000	-12.937	17.287	27	-0.000	-5.734	8.170
	Y 1	-0.000	-2.933	3.714	5	0.000	-23.041	31.066
	Z 5	0.000	-23.041	31.066	1	-0.000	-2.933	3.714
740	X 19	0.000	-32.305	39.962	1	-0.000	-4.574	5.496
	Y 1	-0.000	-4.574	5.496	5	0.000	-33.002	41.450
	Z 5	0.000	-33.002	41.450	1	-0.000	-4.574	5.496
742	X 12	11.182	-33.996	41.876	7	-7.619	-10.732	13.245
	Y 1	0.579	-5.844	7.016	5	4.472	-39.890	49.726
	Z 5	4.472	-39.890	49.726	1	0.579	-5.844	7.016
744	X 23	0.000	-13.227	15.569	20	-0.000	-40.423	51.713
	Y 1	-0.000	-6.442	7.842	5	-0.000	-42.755	53.869
	Z 5	-0.000	-42.755	53.869	1	-0.000	-6.442	7.842
746	X 1	-0.000	-5.888	6.680	35	-0.000	-14.855	18.383
	Y 1	-0.000	-5.888	6.680	5	-0.000	-38.831	45.649
	Z 5	-0.000	-38.831	45.649	1	-0.000	-5.888	6.680
748	X 28	0.000	-4.571	5.649	17	-0.000	-17.691	21.978
	Y 1	0.000	-3.622	4.448	19	-0.000	-24.898	30.755
	Z 19	-0.000	-24.898	30.755	1	0.000	-3.622	4.448